



Greenock West and Gourock

Locality plan 2020

Contents

1.	Introduction to locality planning	3
2.	Locality planning principles	4
3.	Locality planning membership	5
4.	Locality area profile	6
5.	Engaging with the community	8
6.	Locality priorities	10
7.	Community assets	11
8.	Finance	13
9.	Inverclyde Health and Social Care Partnership	15
10.	Locality action plan	17



1 - Introduction

Welcome to Greenock West and Gourock locality plan.

The development of this plan is part of a new approach being adopted by Inverclyde Alliance, the area's Community Planning Partnership to work with local communities to plan and deliver services that will make a real difference to the lives of people in Greenock West and Gourock.

The Community Empowerment (Scotland) Act 2015 placed a legal duty on Inverclyde Alliance to demonstrate that it is making a significant difference to the lives of residents through the planning and delivery of local outcomes and the involvement of community bodies at all stages of community planning. In addition, the Public Bodies (Joint Working) (Scotland) Act 2014 (the Act) puts in place the legislative framework to integrate health and social care services in Scotland. Section 29(3)(a) of the Act requires each Integration Authority to establish at least two localities within the area.

Both these pieces of legislation have provided the opportunity for Inverclyde Alliance and Inverclyde Health and Social Care Partnership to develop six locality plans, this will ensure that the whole of Inverclyde is covered by a Locality Action Plan.

- Kilmacolm and Quarriers Village
- Port Glasgow
- Greenock East and Central
- Greenock West and Gourock
- Greenock South and South West
- Inverkip and Wemyss Bay

The purpose of this Locality Action Plan is to outline the key issues in Greenock West and Gourock that have been identified through the statistical information we hold for this locality, as well as extensive engagement with the community.

The Locality Action Plan also identifies a range of actions that will be taken to address these issues by both Inverclyde Alliance and the local community in Greenock West and Gourock working together.

Locality plans should be informed by communities themselves and work is ongoing to set up locality planning groups who will help us to finalise the development of the plans and work with us to deliver them.

The locality plans, and the locality groups, will help to inform and take forward participatory budgeting (PB) in Inverclyde. PB is a way for people to have a direct say in how local money is spent.

This is an exciting opportunity for anyone who would like to get actively involved in the way services are delivered in the future and shape how their local community might look in the future. Public bodies cannot do this alone, we need to listen to what local people say is important to them and include your views as we plan ahead together.

2 - Locality planning principles

Inverclyde Alliance and the Health and Social Care Partnership agree that the principles for locality planning should be:

- To engage with communities to develop and progress plans for the locality building on community assets.
- To bring community planning public sector partners together with communities to work together to bring about change.
- To co-ordinate and pull together community engagement processes and feedback.
- To work with communities to develop solutions to the issues identified by them.
- To share information across communities and partners.
- To make best use of and share resources.
- To take forward the Health and Social Care Partnership (HSCP) locality planning structures and any other locality based approaches to service delivery.
- To take forward the requirements of the Community Empowerment (Scotland) Act 2015.
- Support development of participatory budgeting.
- To meet any future demand from communities or requirements set out by national or local government.



3 - Locality planning membership

The locality plan will be driven by the locality partnership.

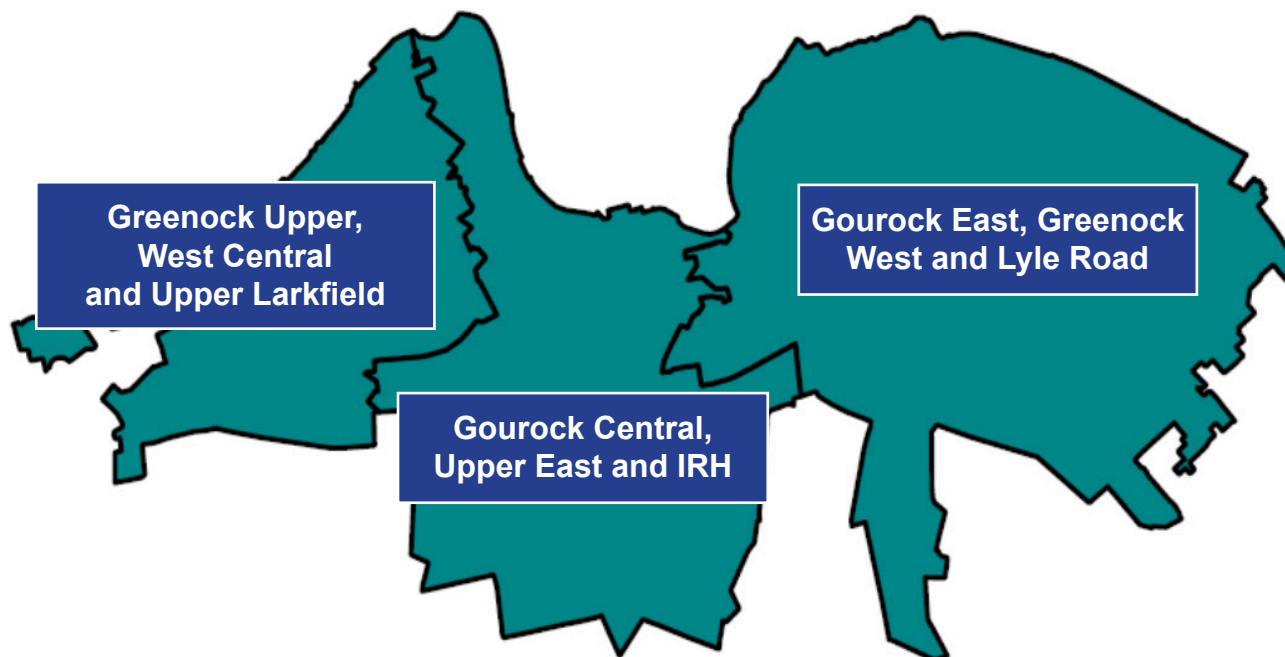
Each locality partnership will consist of:

- The Chair
- Elected Members for the locality
- Representatives of the third and community sector (CVS Inverclyde)
- Community Learning and Development (CLD) link officer(s)
- Health and Social Care Partnership (HSCP) link officer(s)
- Police Scotland representative
- Scottish Fire and Rescue representative
- Chairs of Community Councils
- Community members
- Representative of the housing sector
- Representative of carers and patients
- Health and Social Care professionals e.g. GPs, pharmacists, practice nurses

This list is not exhaustive and as each locality partnership develops then more members maybe invited or co-opted onto the partnership.



4 - Greenock West and Gourock area profile



Population

- Greenock West and Gourock has a population of 21,707 (27.6% of Inverclyde's population).
- 48% of the population are male.
- 52% of the population are female.

(Source: 2017 NRS)

Health

- People residing in Greenock West and Gourock have lower mortality rates than Inverclyde as a whole for early deaths from alcohol conditions, cancer and coronary heart disease. (Source: NRS)
- For Greenock West and Gourock, the rate per 100,000 population for emergency admissions is higher than the figure for Inverclyde as a whole (7,249 vs. 8,528) (Source: ISD/SMR01)

Challenges in Greenock West and Gourock

- The data zone of Gourock Central, Upper East and IRH falls within the 20% most deprived data zones in Scotland. (Source: SIMD 2020)
- 13.97% of the working age population is employment deprived and 13.62% is income deprived in Gourock Central, Upper East and IRH. (Source: Scotpho Online Profile Tool)

Environmental Challenges

- Gourock Central, Upper East and IRH has a crime rate of 36.93 per 1,000 residents and Gourock East, Greenock West and Lyle Road has a rate of 9.36 per 1,000 residents.
- 25.16% of the population of Gourock Central, Upper East and IRH and 19.46% of the population of Gourock East, Greenock West and Lyle Road live within 500 metres of a derelict land site.

(Source: Scotpho Online Profile Tool)

5 - Engaging with the community of Greenock West and Gourock

Extensive engagement has been carried out with residents in Greenock West and Gourock to find out what they think about living in Greenock West and Gourock and identify what improvements they would like to see take place.

Our place our future (2017)

In 2017 Inverclyde Alliance carried out a survey across Inverclyde called 'Our Place Our Future' which delved into a wide range of themes from traffic and parking, streets and spaces, to work, care, housing and local amenities.

There were 265 responses from people who gave post codes that sit within the locality of Greenock West and Gourock.

Based on the overall average scores, satisfaction levels were highest with:

- Natural Space (5.7)
- Feeling safe (4.9)
- Identity and belonging (4.8)
- Social Interaction (4.8)

The lowest scoring areas in terms of dissatisfaction were:

- Influence and sense of control (3.9)
- Work and local economy (3.9)
- Housing and community (4.1)
- Care and maintenance (4.1)

People were asked what they like about their locality:

- Great views
- Great community spirit
- Gourock has great untapped heritage
- It's good for young children
- Great place to raise a family
- Great shopping and lots to do

People were asked about their concerns regarding the locality:

- Parking
- Lack of social housing and rise in private landlords
- Walking and cycling routes not joined up
- Poor public transport
- Disrepair of roads, pavements and footpaths
- Limited job opportunities

'Celebrate the Present, Shape the Future' Event September 2019

In 2019 Inverclyde Alliance held a series of engagement events across all 6 localities in Inverclyde called "Celebrate the Past, Shape the Future". The Greenock West and Gourock event was held in the Gamble Halls on 20 August 2019.

Residents in Greenock West and Gourock told us that that the issues of concern to them are:

- Parking, particularly for those commuting to Glasgow by train
- Public transport
- Potholes, pavements and pathways
- More facilities and activities for the elderly who are socially isolated
- More play and recreation for young people

Engagement with Young People for the HSCP Strategic Plan 2019-20

219 children from across Inverclyde gave us their views and identified eight priorities and actions that are important to them. These included:

- Life skills education
- Inter-generational participation
- Recovery: celebrating and supporting recovering communities
- Feeling safe and building relationships
- Mental health support, self-care and education
- Addiction: utilising people with lived experience as an educational resource
- Affordability and visibility of services / activities locally.
- Compassion and kindness

Engagement with people for the HSCP strategic plan 2019-2020 The six “Big actions”

Inverclyde HSCP is built on our established integration arrangements and our vision, values and six ‘big actions’ have been shaped through a wide range of mechanisms of engagement, to reach as many local people, staff and carers as possible. We have also undertaken targeted engagement with the children and young people of Inverclyde to ensure that their voices are heard.

- **Big action 1** - Reducing inequalities by building stronger communities and improving physical and mental health.
- **Big action 2** - A nurturing Inverclyde will give our children and young people the best start in life.
- **Big action 3** - Together we will protect our population.
- **Big action 4** - We will support more people to fulfil their right to live at home or within a homely setting and promote independent living, together we will maximise opportunities to provide stable sustainable housing for all.
- **Big action 5** - Together we will reduce the use of, and harm from alcohol, tobacco and drugs.
- **Big action 6** - We will build on the strengths of our people and our community.

6 - Greenock West and Gourock locality priorities

As a result of the extensive engagement that has taken place, the following priorities will be taken forward through the locality plan for Greenock West and Gourock.

- People living and working in Greenock West and Gourock will have parking that meets their needs.
- Residents in Greenock West and Gourock are able to access improved transport that meets their needs.
- People living in Greenock West and Gourock will have roads, pavements and pathways that meet their needs.
- Children and young people are engaged in activities in Inverclyde that promote wellbeing.
- Older people living in Greenock West and Gourock are able to participate in their local community.

Specific actions relating to Greenock West and Gourock are outlined in the Locality Action Plan in section 10.



7 - Community assets

Greenock West and Gourock has a range of physical assets and details of these are contained within the table below. It is important that these assets are fully utilised for the benefit of residents in Greenock West and Gourock and that consideration is given as to how these assets could be better used in order to improve the quality of life and deliver better outcomes for local people.

People assets (Voluntary / Community Groups)

Gamble Halls
Chatty Café
Gourock Amateur Swimming Club
Gourock Golf Club
Gourock Bowling Club
Greenock Camera Club
Greenock and District Sea Cadets Corps
Greenock Players Youth
Greenock Wanderers – Ladies
Greenock Wanderers – Men
Rugby
Greenock Art Club
Phoenix Theatre Company
The Bothy Health Walks – Gourock
Fort Matilda Tennis Club
Royal Gourock Yacht Club
Gourock Ladies Curling Club
Gourock Karate Club
Cardwell Bay Sailing Club
Greenock Table Tennis Club
Royal West of Scotland Amateur Boat Club

Physical assets

Schools / Nurseries

Ardgowan Primary School
Gourock Primary School
Moorfoot Primary School
St Ninian's Primary School
Clydeview Academy

Places of Worship

Elim Pentecostal Church
Gourock Baptist Church
Greenock Methodist Church
St Bartholomew's Scottish Episcopal Church
St John's Church
St John's Church of Scotland
St John's Episcopal Church
St Mary's Church
St Ninian's R.C. Church



Physical assets

Leisure

Gourock Gym and Pool
Greenock Sports Centre
Gourock Library
Watt Institution

Health

GP Practices

Ardgowan Medical Practice
Gourock Medical Practice

Pharmacies

Lloyds Pharmacy
Lloyds Pharmacy
Pettigrew's Pharmacy
TLC Gourock Pharmacy

Dental Practices

Ardgowan Dental Practice
Frederick Dental Practice
George Square Dental Practice
The Gourock Dental Practice
Weir Dental Surgery

Opticians

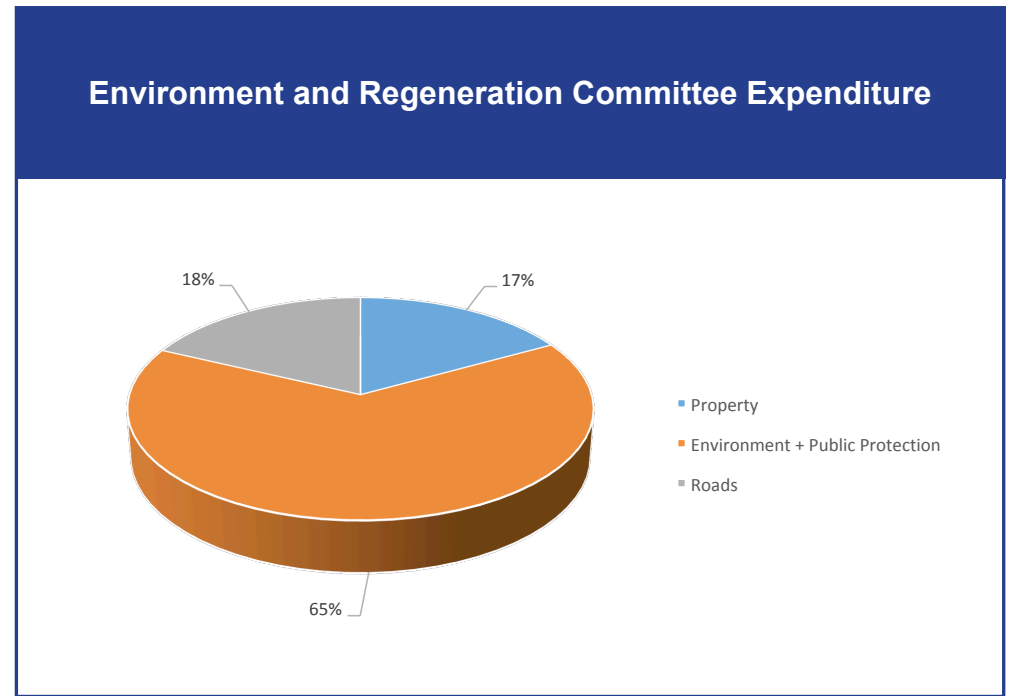
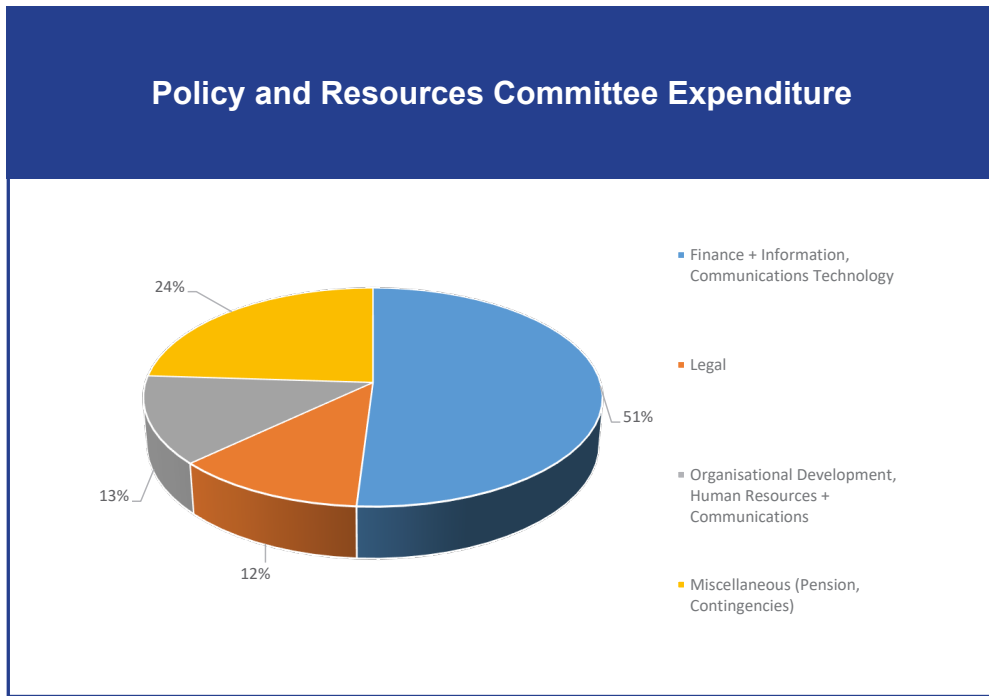
William Aitchison

Care Homes

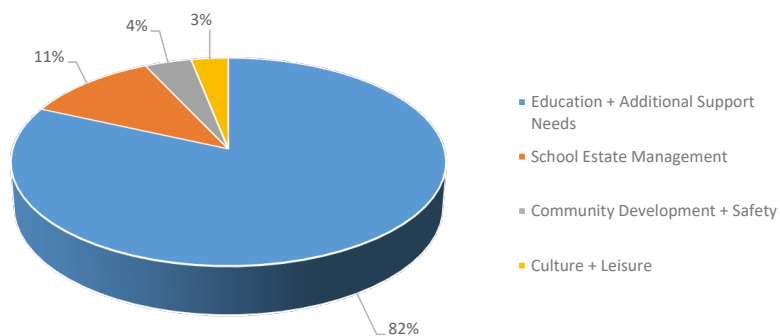
Alt-Na-Craig
Bagatelle
Barchester Balclutha Court Care Home
Belleaire House
Blackwood Care – Maclehose Court
Glenfield
Holy Rosary Residence
Quarriers
Sir Gabriels Wood's Mariner's Home
Westview

8 - Finance

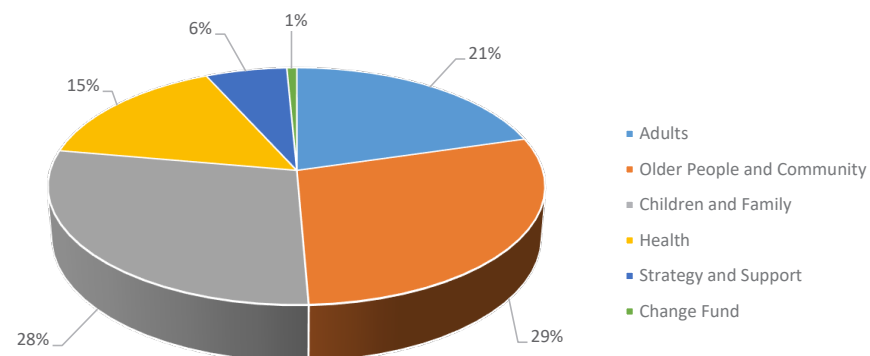
Council 2019/20 Budgets expenditure breakdown by Service and Income



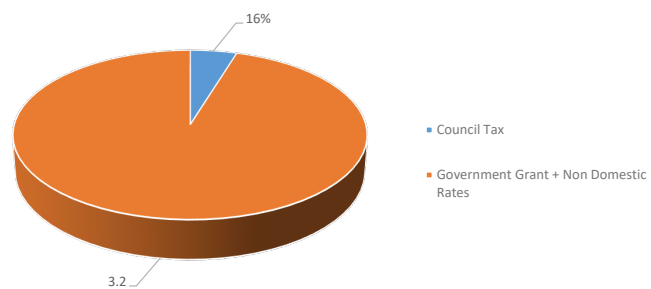
Education and Communities Committee



Health and Social Care Committee

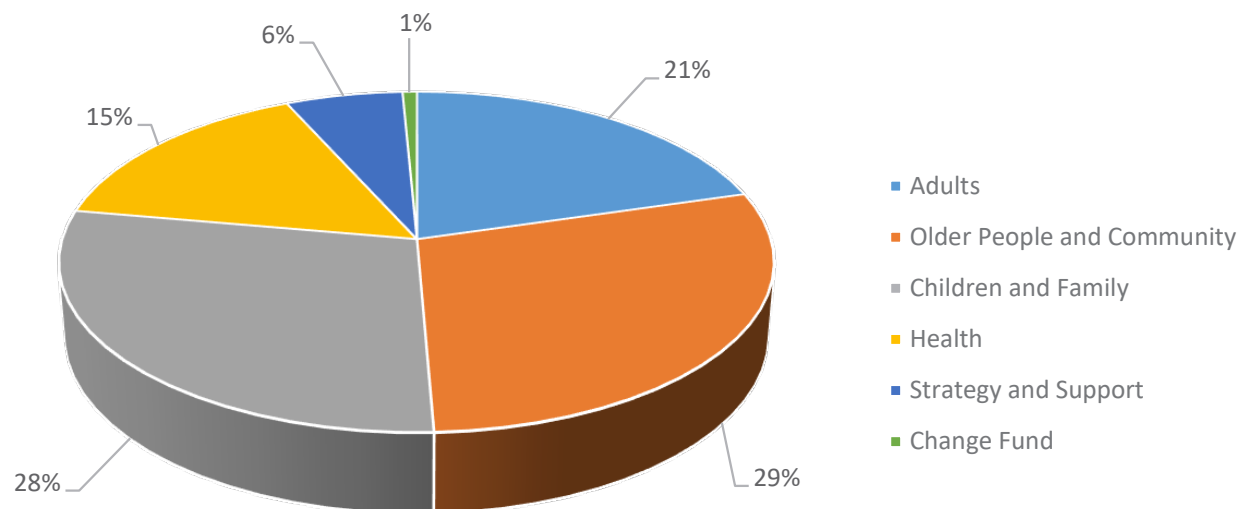


Where the money comes from: 2019/20 budget



9 - Inverclyde Health and Social Care Partnership

Health and Social Care Partnership



10 - Greenock West and Gourock locality action plan

What do we want to achieve?	LOIP Priority	Link to HSCP Six Big Actions	Actions to take this forward	Lead	Timescale/ Progress
People living and working in Greenock West and Gourock will have parking that meets their needs	Environment Repopulation	We will support more people to fulfil their right to live at home or within a homely setting and promote independent living.	<ul style="list-style-type: none"> Identify the parking related issues that the community would like to see addressed. Identify actions to address the parking related issues in Greenock West and Gourock. 	ENVIRONMENT AND REGENERATION/CLD Greenock West and Gourock Communications and Engagement Group	
Residents in Greenock West and Gourock are able to access improved transport that will meet their needs.	Environment Inequalities Repopulation	We will support more people to fulfil their right to live at home or within a homely setting and promote independent living.	<ul style="list-style-type: none"> Evaluate transport links between Greenock West and Gourock and the rest of Inverclyde and identify any appropriate actions. Identify the transport related issues that the community would like to see addressed. 	HSCP/ ENVIRONMENT AND REGENERATION Greenock West and Gourock Communications and Engagement Group	
People living in Greenock West and Gourock will have roads, pavements and pathways that meet their need.	Environment Repopulation	We will support more people to fulfil their right to live at home or within a homely setting and promote independent living.	<ul style="list-style-type: none"> Identify the roads, pavements and pathways that local residents are concerned about. Communicate to local residents the work being undertaken by the Council regarding the maintenance of roads, pavements and pathways. 	ENVIRONMENT AND REGENERATION CLD Greenock West and Gourock Communications and Engagement Group	
Children and young people are engaged in activities in Inverclyde that promote wellbeing.	Inequalities	<p>A nurturing Inverclyde will give our children and young people the best start in life.</p> <p>Reducing inequalities by building stronger communities and improving physical and mental health.</p>	<ul style="list-style-type: none"> Ensure that good communication about all activities and facilities for young children and teenagers in place. Review the provision of youth clubs for teenagers in the area. Identify the activities available for pre-school children. If required – adapt or increase current provision. 	CLD Youth Work	
Older people living in Greenock West and Gourock are able to participate in their local community.	Inequalities	<p>We will support more people to fulfil their right to live at home or within a homely setting and promote independent living.</p> <p>Reducing inequalities by building stronger communities and improving physical and mental health.</p>	<ul style="list-style-type: none"> Evaluate the current services and schemes in place to tackle isolation amongst the elderly. Engage with elderly people living in Greenock West and Gourock to identify the services and support that they would like to access. 	Third Sector / HSCP CLD – Community Work / HSCP	