



---

<b>Report To:</b>	<b>Inverclyde Alliance Board</b>	<b>Date:</b>	<b>5 October 2020</b>
<b>Report By:</b>	<b>Derek Lang Chair of Community Safety Partnership Strategy Group/Superintendent (Service and Support Delivery) Police Scotland</b>	<b>Report No:</b>	
<b>Contact Officer:</b>	<b>Hugh Scott- Service Manager</b>	<b>Contact No:</b>	<b>01475 715459</b>
<b>Subject:</b>	<b>Inverclyde Community Safety Partnership Strategic Assessment 'Making Inverclyde Safer Together 2020-22'</b>		

---

## **1.0 PURPOSE**

1.1 The purpose of this report is to present to the Inverclyde Alliance Board the Inverclyde Community Safety Partnership Strategic Assessment 2020-22 'Making Inverclyde Safer Together'. The document is attached as Appendix 1.

## **2.0 SUMMARY**

- 2.1 At its meeting on 9 December 2019, the Inverclyde Alliance Board endorsed changes to the governance structure of the CSP in Inverclyde leading to the preparation and future publication of a single community safety strategy for Inverclyde. This action was remitted to the Community Safety Partnership Strategy Group for implementation.
- 2.2 The CSP Strategy Group is the senior officers group for community safety in Inverclyde. It acts as the scrutiny body for community safety activity in Inverclyde, and has responsibility of a number of groups including the CSP Coordinating Group and Violence Against Women Multi-Agency Partnership. The CSP Strategy Group also provides a direct link to the Inverclyde Alliance Board.
- 2.3 The Inverclyde Community Safety Partnership has identified three strategic priorities which will contribute to 'Making Inverclyde Safer Together'. Each outcome is linked to national priorities under the national Building Safer Communities programme. The three outcomes are noted in detail in sections 2.4 through to 2.6
- Reducing Violence, Crime and Disorder-
  - Reducing Unintentional Harm and Injury
  - Building Resilient Communities
- 2.4 Regarding violence, crime and disorder, the CSP acknowledges the significant impact crimes have on individuals, their families and communities across Inverclyde especially those crimes involving violence. The Partnership is committed to reducing all forms of violence, to reduce the numbers of victims of crime and to work with residents in reducing incidences of disorder. The key themes identified are; violence against women, violence, antisocial behaviour and secondary fire raising.

- 2.5 Unintentional Harm and Injury has been defined as predictable and preventable unintentional physical and psychological harm and injury and within Inverclyde focuses on home safety, fire safety and road safety. Within Inverclyde we seek to improve partnership working to enhance home safety awareness, road safety awareness and fire safety awareness. The key themes identified are; dwelling fires, water safety, road safety and home safety.
- 2.6 The CSP want all residents of Inverclyde to live in friendly, vibrant and cohesive communities which value diversity and support those in need. We want to encourage and support our communities to ensure they are resilient, safe and have low levels of crime. A number of key themes identified include the promotion of the Improving Inverclyde Initiative, the promotion of Crimestoppers/Fearless to report crime anonymously and confidentially and hate crime awareness.
- 2.7 Subject to approval of the Strategic Assessment, the document will be remitted to the CSP Coordinating Group and Violence Against Women Multi-Agency Partnership to create an improvement action plan. The improvement action plan will be subject of an annual report and will be reported to the Inverclyde Alliance Board in October 2021.

### **3.0 RECOMMENDATIONS**

- 3.1 It is recommended that the Alliance Board:
- a. Approves the publication of the Inverclyde Community Safety Partnership Strategic Assessment 'Making Inverclyde Safer Together 2020-22'.

**Aubrey Fawcett**  
**Chair, Programme Board**  
**Chief Executive, Inverclyde Council**

## **4.0 BACKGROUND**

- 4.1 The Inverclyde Alliance Board at its meeting on 19 March 2018 approved new governance and delivery arrangements for community planning and the delivery of the LOIP in Inverclyde. Prior to the new governance arrangements for community planning, community safety reported to a previous Single Outcome Agreement (SOA) outcome delivery group with responsibility for a number of functions including community safety.
- 4.2 In January 2018 a development day was held by community safety partners to prepare a new community safety strategic assessment as well as consideration of a possible future structure of community safety arrangements in Inverclyde. During April and May 2018 a series of meetings were held with Alliance partners to consider the structure of the community safety partnership within Inverclyde.
- 4.3 Partners agreed that there was a need for a continuation of a Community Safety Partnership in Inverclyde and identified a requirement of a senior officers group with overall responsibility for community safety arrangements in Inverclyde in addition to a clear structure of sub-groups relating to community safety matters. In June 2018 the first meeting of the Community Safety Partnership Strategy Group (Strategy Group) met to agree the 'Terms of Reference' (ToR).
- 4.4 Working to previous governance arrangements, there were two separate strategic documents (Inverclyde Violence Against Women Strategy 2017-2022 and Community Safety Strategic Assessment) which are progressed by the Violence Against Women Multi-agency Partnership and Community Safety Co-ordinating Group respectively. In December 2019 a further update paper was presented to the Inverclyde Alliance Board outlining proposals to create a single community safety strategy and single reporting structure to the Inverclyde Alliance Board.
- 4.5 Following approval by the Inverclyde Alliance, the CSP Strategy Group began preparations for a single strategy with preparatory work carried out during 2020. Due to the Covid-19 pandemic the CSP Strategy Group met on 22 July 2020 to consider future improvement actions in the context of a Covid-19 recovery plan, and progress in respect of the publication of the Strategic Assessment 2020-22. All partners have confirmed their post-Covid commitment to the CSP strategic priorities and their commitment of adequate resources for the delivery of improvement actions in line with strategic priorities.

## **5.0 MAKING INVERCLYDE SAFER TOGETHER 2020-22**

- 5.1 The introductory section of the document outlines the national and local context of community safety, Inverclyde CSP Structure, the methodology and the performance measures to inform the strategic priorities. As part of the commitment to improve services and target resources the Community Safety Partnership uses the 'family groups' detailed in the Local Government Benchmarking Framework (LGBF) to compare against other local authorities that are similar in terms of the population they serve (e.g. relative deprivation and affluence) or the type of area in which they serve them (e.g. urban, semi-rural, rural).
- 5.2 The CSP has identified three strategic priorities which will contribute to 'Making Inverclyde Safer Together'. Each outcome is linked to the national priorities under the national Building Safer Communities programme. Contained within each outcome are key themes which community safety partners have identified as a priority during the two years of the strategy. Each theme contained within the assessment has identified; a lead group; evidence outlining the problem; and, the responses from the Community Safety Partnership. Progress of each theme will be reported to the Inverclyde Alliance Board on an annual basis. The three outcomes are:
- Reducing Violence, Crime and Disorder
  - Reducing Unintentional Harm and Injury

- Building Resilient Communities

### 5.3 Reducing Violence, Crime and Disorder

The Community Safety Partnership acknowledges the significant impact crimes have on individuals, their families and communities across Inverclyde especially those crimes involving violence. The Partnership is committed to reducing all forms of violence, to reduce the numbers of victims of crime and to work with residents in reducing incidences of disorder. The key themes identified are:

- Violence against Women
- Violence
- Antisocial Behaviour
- Secondary Fire raising

### 5.4 Reducing Unintentional Harm and Injury

Unintentional Harm and Injury has been defined as predictable and preventable unintentional physical and psychological harm and injury and within Inverclyde focuses on home safety, fire safety and road safety. Within Inverclyde we seek to improve partnership working to enhance home safety awareness, road safety awareness and fire safety awareness. The key themes identified are:

- Dwelling fires
- Water Safety
- Road safety
- Home Safety

### 5.5 Building Resilient Communities

The Community Safety Partnership want all residents of Inverclyde to live in friendly, vibrant and cohesive communities which value diversity and support those in need. We want to encourage and support our communities to ensure they are resilient, safe and have low levels of crime. The key themes identified are:

- Neighbour Watch/Neighbourhood Alert Scheme
- Mentors in Violence Prevention
- Hate crime awareness
- Child Protection Responsibilities
- Improving Inverclyde Initiative
- Locality Planning Groups
- Crimestoppers / Fearless

5.6 The document also includes a range of performance measures that will inform progress against the outcomes and themes.

## 6.0 IMPLICATIONS

6.1 **Legal:** None

**Finance:** None

**Human Resources:** None

**Equality and Diversity:** Ongoing to ensure protected groups are not adversely impact in relation to community safety issues.

**Repopulation:** Engaging local people to ensure that they feel and are safe is a key aim of the CSP  
**Inequalities:** The strategic assessment will focus on tackling inequalities in the areas experiencing the

greatest inequality of outcome.

## **7.0 CONSULTATIONS**

7.1 None

## **8.0 LIST OF BACKGROUND PAPERS**

8.1 Inverclyde Alliance Board 19 March 2018: 'LOIP Governance and Delivery Structure'.  
Inverclyde Council Education and Communities Committee 3 September 2019: 'Community Safety & Resilience Update' (EDUCOM/64/19/HS).  
Inverclyde Alliance Board 7 October 2019: 'Inverclyde Community Safety Partnership Update'.  
Inverclyde Alliance Board 7 October 2019: 'Violence Against Women Multi-Agency Partnership Update'.  
Inverclyde Council Education and Communities Committee 05 November 2019  
'Inverclyde Draft Antisocial Behaviour Strategy 2020-25' (EDUCOM/84/19/HS).  
Inverclyde Alliance Board 9 December 2019: 'Inverclyde Community Safety Partnership- Proposed Governance Arrangements'.  
Inverclyde Council Education and Communities Committee 10 March 2020: 'Inverclyde Antisocial Behaviour Strategy 2020-2025' (EDUCOM/21/20/HS).

**INVERCLYDE COMMUNITY SAFETY PARTNERSHIP  
STRATEGY 2020-2022  
MAKING INVERCLYDE SAFER TOGETHER**

# FOREWORD

**Councillor Stephen McCabe, Leader of Inverclyde Council and Chair of Inverclyde Alliance**

**As chair of the Inverclyde Alliance, the Inverclyde Community Planning Partnership, I am delighted to introduce Inverclyde's Community Safety Strategy for the period 2020-22 which sets out how community safety partners across Inverclyde will work together with Inverclyde's communities to make Inverclyde safer together.**

What 'community safety' means will mean different things for different individuals and communities across Inverclyde but ultimately it is about communities being resilient and being able to feel safe and be safe. Within this Strategy the Community Safety Partnership are focusing on three outcomes that aims to help communities feel safe and be safe; reducing violence, crime and disorder, reducing unintentional harm and injury and building resilient communities, more information on what the Community Safety Partnership will do to achieve these outcomes are contained within the strategic assessment.

The Community Safety Partnership have also undertaken a Strategic Needs Assessment to enable the Partnership makes an informed appraisal of where the greatest needs of our communities lie and where partnership working could make the greatest impact.

As Chair of Inverclyde Alliance, the Community Planning Partnership for Inverclyde, there is a commitment to develop and deliver co-ordinated, effective, efficient services together, meeting the needs of our communities and delivering better outcomes for all. In my foreword for the Inverclyde Local Outcomes Improvement Plan I mentioned that partnership working is more important now than it has been with the need to deliver better, more targeted services together, using shared resources where possible and I am confident that the Community Safety Partnership acknowledges this approach.

Councillor Stephen McCabe

Leader of Inverclyde Council

Chair of Inverclyde Alliance

# CONTEXT

## National Context

The National Performance Framework (NPF) was launched jointly by the Scottish Government and COSLA in June 2018. It sets out eleven long-term outcomes for Scotland, underpinned by 81 national performance indicators against which progress can be measured. In respect of community safety the relevant outcome is:

**We live in communities that are inclusive, empowered, resilient and safe.**

The Justice Strategy for Scotland also sets out key outcomes to help achieve a just, safe, resilient Scotland and has identified four outcomes to help achieve this:

- We live in safe, cohesive and resilient communities
- Prevention and early intervention improve wellbeing and life chances
- Our systems and interventions are proportionate, fair and effective
- We deliver person-centred, modern and affordable public services.

The Scottish Government and COSLA will establish a new national public health body- Public Health Scotland- by 1<sup>st</sup> April 2020. As a partnership between national and local government Public Health Scotland's purpose will be to improve and protect Scotland's health and wellbeing and reduce health inequalities. They will also support health and social care by focussing on prevention in order to reduce unsustainable pressures on the system. The Scottish Government and COSLA agreed six public health priorities to support national and local partners across Scotland to work together. This includes the priority: A Scotland where we live in vibrant, healthy and safe places and communities.

## Local Context

The Inverclyde Alliance is responsible for community planning in Inverclyde. It is made up of elected representatives and senior officers from across Inverclyde's public and third sector organisations- Greater Glasgow and Clyde NHS, Greenock Chamber of Commerce, Greenock and District Trades Council, Inverclyde Council, Job Centre Plus, Scottish Enterprise, Skills Development Scotland, Scottish Fire and Rescue, Strathclyde Partnership for Transport, Police Scotland, Voluntary Sector representation facilitated by CVS Inverclyde, West College Scotland.

There are a wider range of other organisations involved across the various partnerships which make up the larger Community Planning Partnership including Riverside Inverclyde, local Housing Associations and a variety of voluntary organisations.

The key plan for the delivery of the Inverclyde Alliance is the Inverclyde Outcomes Improvement Plan (2017-22). This plan sets out what the Alliance wants to achieve by way of improving outcomes over the short, medium and long term for the citizens of Inverclyde. Three strategic priorities have been identified which provides the framework for the development of action plans that reflects the needs of our population and the aspirations of our communities with the overall aim of reducing deprivation and inequalities. The three strategic priorities are:



- Population- Inverclyde's population will be stable and sustainable with an appropriate balance of socio - economic groups that is conducive to local economic prosperity and longer term population growth.
- Inequalities - There will be low levels of poverty and deprivation and the gap in income and health between the richest and poorest members of our communities will be reduced.
- Environment, Culture and Heritage- Inverclyde's environment, culture and heritage will be protected and enhanced to create a better place for all Inverclyde residents and an attractive place in which to live, work and visit.

The Police and Fire Reform (Scotland) Act 2012 created a national police force and a national fire and rescue service in Scotland, in addition to this the Act gives local authorities a function in monitoring and scrutinising the role of Police Scotland and The Scottish Fire & Rescue Service through the delivery of local Police plans and local Fire & Rescue Plans. Within Inverclyde scrutiny of the local police plan and local fire plan is carried out by the Inverclyde Council local Police and Fire Scrutiny Committee.

The Community Safety Strategy also links with other local partnerships and strategic documents including the Inverclyde Alcohol and Drugs Partnership annual reports and associated plans and the Inverclyde Community Justice Outcomes Improvement Plan.

For more information on the geography of Inverclyde and its Alliance priorities, please visit <https://www.inverclyde.gov.uk/council-and-government/community-planning-partnership/inverclyde-outcome-improvement-plan>

# INVERCLYDE CSP STRUCTURE

This section focuses on the Inverclyde CSP structure setting out the various groups and their respective responsibilities. An organisational chart as of April 2020 showing the overall partnership structure is shown overleaf.

The **Inverclyde Alliance Board** (Inverclyde Alliance) is the Community Planning Partnership for Inverclyde. Inverclyde Alliance is a family of partnerships working on shared priorities and promoting better collaboration in Inverclyde. In respect of community safety the Inverclyde Alliance may remit matters to the Strategy Group for local implementation, a recent example was the implementation of the National Missing Persons Framework.

As community safety partners Inverclyde Council, Police Scotland and Scottish Fire & Rescue service (SFRS) are required to make submissions to Inverclyde Council committee's as per the Inverclyde Council Standard Orders and Scheme of Administration. Depending on the nature of the submission this will either be remitted to the **Inverclyde Council Education and Communities Committee** or **Inverclyde Local Police & Fire Scrutiny Committee**.

The **Inverclyde Community Safety Partnership Strategy Group** (Strategy Group) has the overall responsibility for the delivery of community safety activities in Inverclyde. The Strategy group sets the outcomes and themes on behalf of the overall community safety partnership and monitors the progress of the work carried out by the Inverclyde Community Safety Partnership Coordinating Group and the Inverclyde Violence Against Women Multi Agency Partnership. The Strategy Group also provides feedback in relation to community safety related activity to the Inverclyde Alliance Board at least annually in addition to any issues remitted from the Inverclyde Alliance.

The **Inverclyde Community Safety Partnership Coordinating Group** (Coordinating Group) leads on the relevant themes contained within the strategic assessment on a variety of issues such as violence reduction, antisocial behaviour, dwelling fires, road safety and is currently responsible for the delivery of the Improving Inverclyde Initiative. The Coordinating Group also oversees activity on a number of sub-groups either on a thematic basis or a specific tasking issue (such as planning arrangements for the 5<sup>th</sup> November).

The **Inverclyde Violence Against Women Multi Agency Partnership** (VAWMAP) leads on the development and integration of a strategic approach to the prevention and elimination of Violence Against Women. The VAWMAP also oversees the activity of sub-groups in relation to the Multi Agency Risk Assessment Conference (MARAC).

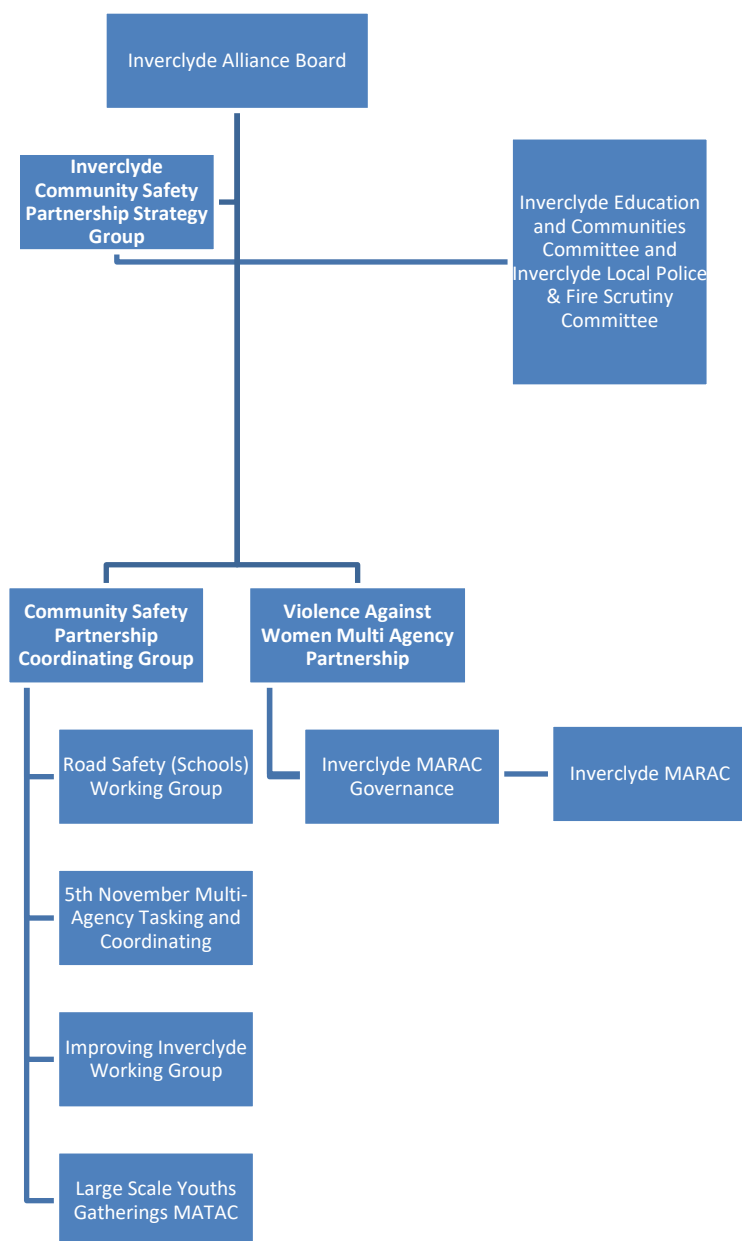
Delivery of the key themes contained within this strategic assessment will be allocated to either the Coordinating Group or VAWMAP for action (noted at each theme). Each group will be required to submit an improvement action plan to the Strategy Group detailing the following requirements:

- The actions regarding the relevant theme outlining the Prevention, Rehabilitation, Information, Communication and Enforcement responses to ensure that the Community Safety Partnership make best use of available resources.
- Any information and data gaps which require to be addressed to ensure that the Coordinating Group or VAWMAP work effectively.

- Any emerging threats which are likely to impact on the work of the Community Safety Partnership during the life time of the strategy.
- A communications plan/strategy outlining how as a Partnership we plan to raise awareness of the need to keep people safe in their communities on a real time campaign basis and long term campaign basis.

Feedback on each action is provided by the relevant lead officer at their respective group and progress is also reported to the Strategy Group by the Coordinating Group and VAWMAP Chair at each meeting.

### Community Safety Partnership Structure



## METHODOLOGY

In order to identify the outcomes and subsequent themes that will help make Inverclyde's communities safer a wide evidence base has been used. This approach ensures that the activities identified within the improvement action plan are targeted towards the issues, places, communities and individuals most in need. Our three priority outcomes have been identified through national priorities and the key themes identified through available data and current priorities.

Where required, additional analysis has been undertaken on themes identified within this assessment. The following sources have been considered to identify the priority themes:

- Inverclyde Outcomes Improvement Plan 2017-2022
- Inverclyde Strategic Needs Assessment 2017 (in respect of the Inverclyde Outcomes Improvement Plan)
- Local fire and rescue plan for Inverclyde 2017-2020
- Police Scotland Inverclyde Area Plan 2017-2020
- Inverclyde Violence against Women Multi Agency Partnership- Violence against Women Strategy 2017-2022
- Inverclyde Community Justice Outcomes Improvement Plan

In addition to the above, a number of community engagement sources such as the Scottish Household Survey, Inverclyde Citizen's Panel, Our Place Our Future survey and locality planning events (2019). Where relevant, these engagements have been included within the strategy.

As part of the Community Planning element of the Community Empowerment (Scotland) Act 2015, Inverclyde Alliance has a responsibility to develop locality plans for those areas of Inverclyde which experience the greatest inequalities. Work has been ongoing to develop locality arrangements and locality plans across the 6 locality areas in Inverclyde. As this work continues the Community Safety Partnership acknowledge that localities may identify issues around community safety and will work with the locality groups, community organisations and partners in order to identify the actions that can be taken, when they will be taken and allocated responsibility for the implementation of the actions.

In or to inform our priorities evidence was taken from the following publications:

1. Domestic abuse in Scotland: 2018-2019 statistics (Scottish Government, 2020).
2. Fire Safety and Organisational Statistics 2019.
3. Fire and Rescue Incident Statistics 2019.
4. Recorded crime in Scotland: 2018-2019 (Scottish Government, 2019).
5. Reported Road Casualties Scotland 2018 (Transport Scotland, 2019).
6. MAST Online road safety analysis (March 2020).
7. Mid-Year Population Estimates (National Records of Scotland, 2019).
8. Citizen's Panel Spring 2018 (Inverclyde Council, 2018).
9. Our Place Our Future (Inverclyde Alliance, 2017).
10. Scottish Household Survey 2018 (Scottish Government, 2019)

## Performance Information

A range of performance indicators have been identified to allow the Community Safety Partnership to measure progress in achieving our outcomes. This annual report includes a selection of performance indicators to illustrate how we are doing. Data for 2018/19 is provided where available however sometimes there is no data update available or that data has yet to be published. Where 2018/19 data has yet to be published, the latest available data is provided. Please note that the performance indicators have been identified from a range of sources. Some of these sources are based on actual measurements, some have been generated from representative samples based on household data or based on a 'per head' of population (the range of the 'per head' population will vary from study to study but the range will be identified throughout the document).

As part of the commitment to improve services and target resources the Community Safety Partnership uses the 'family groups' detailed in the Local Government Benchmarking Framework (LGBF) to compare against other local authorities that are similar in terms of the population they serve (e.g. relative deprivation and affluence) or the type of area in which they serve them (e.g. urban, semi-rural, rural). For Inverclyde, these groupings are:

<b>Family Group by the type of population they serve e.g. level of deprivation and affluence</b>	<b>Family Group by the type of area they serve e.g. rural, semi-rural and urban</b>
Eilean Siar	Angus
Dundee City	Clackmannanshire
East Ayrshire	Midlothian
North Ayrshire	South Lanarkshire
North Lanarkshire	Renfrewshire
West Dunbartonshire	West Lothian
Glasgow City	East Renfrewshire
Inverclyde	Inverclyde

This methodology has helped the Community Safety Partnership to identify key community safety themes which are explained in detail in pages 11 to 20.

## STRATEGIC ASSESSMENT AT A GLANCE

The Inverclyde Community Safety Partnership has identified three strategic priorities which will help in making Inverclyde Safer Together. Each outcome is linked to national priorities under the Building Safer Communities programme. Contained within each outcome are key themes which community safety partners have identified as a priority during the two years of the strategy. Each theme contained within the assessment has identified a lead group, evidence outlining the problem and the responses from the Community Safety Partnership. Progress of each theme will be reported to the Inverclyde Alliance Board on an annual basis.

### Outcome 1- Reducing Violence, Crime and Disorder

The Community Safety Partnership acknowledges the significant impact crimes have on individuals, their families and communities across Inverclyde especially those crimes involving violence. The Partnership is committed to reducing all forms of violence, to reduce the numbers of victims of crime and to work with residents in reducing incidences of disorder. The key themes identified are:

- Violence against Women
- Antisocial Behaviour
- Violence
- Secondary Fire raising

### Outcome 2- Reducing Unintentional Harm and Injury

Unintentional Harm and Injury has been defined as predictable and preventable unintentional physical and psychological harm and injury and within Inverclyde focuses on home safety, fire safety and road safety. Within Inverclyde we seek to improve partnership working to enhance home safety awareness, road safety awareness and fire safety awareness. The key themes identified are:

- Dwelling fires
- Water Safety
- Road safety
- Home Safety

### Outcome 3- Building Resilient Communities

The Community Safety Partnership want all residents of Inverclyde to live in friendly, vibrant and cohesive communities which value diversity and support those in need. We want to encourage and support our communities to ensure they are resilient, safe and have low levels of crime. The key themes identified are:

- Neighbour Watch/Neighbourhood Alert Scheme
- Mentors in Violence Prevention
- Hate crime awareness
- Child Protection Responsibilities
- Improving Inverclyde Initiative
- Locality Planning Groups
- Crimestoppers / Fearless

# OUTCOME 1- REDUCING VIOLENCE, CRIME AND DISORDER IN OUR COMMUNITIES

The Community Safety Partnership acknowledges the significant impact crimes have on individuals, their families and communities across Inverclyde especially those crimes involving violence. The Partnership is committed to reducing all forms of violence, to reduce the numbers of victims of crime and to work with residents in reducing incidences of disorder.

The Community Safety Partnership in this outcome will focus on violence against women, antisocial behaviour, violence and secondary fire raising.

## **Theme- Violence Reduction**

Lead- Coordinating Group

### **Evidence:**

- The number of Group 1 non-sexual crimes of violence<sup>1</sup> recorded in 2018/19 accounts 4% of all crimes recorded in Inverclyde.
- In 2018/19, the rate of Group 1 non-sexual crimes of violence increased to 16.8 per 10,000 of the population in Inverclyde.
- In 2018/19, the rate of Group 1 non-sexual crimes of violence increased to 14.7 per 10,000 of the population in Scotland.
- In 2018/19, Inverclyde was rated 4<sup>th</sup> highest out of the 8 local authorities in the LGBF grouping by type of population for Group 1 non-sexual crimes of violence per 10,000 of the population.
- In 2018/19, the rate of Handling offensive weapons was 18.8 per 10,000 of the population in Inverclyde.
- In 2018/19, 43% of Handling an offensive weapon crimes in Inverclyde involved a bladed weapon.
- In 2018/19, the rate of Handling offensive weapons was 16.4 per 10,000 of the population in Scotland.
- In 2018/19, Inverclyde was rated 5<sup>th</sup> highest out of the 8 local authorities in the LGBF grouping by type of population for Handling offensive weapons per 10,000 of the population.
- In the Our Place Our Future survey, of the 1310 responses, 35 people made comments about not feeling safe.

Group 1 crime includes: Murder, Culpable homicide, Attempted murder, Serious assault, Robbery and assault with intent to rob, Threats and extortion, Cruel and unnatural treatment of children, Abortion, Concealment of pregnancy, Possession of a firearm with intent to endanger life, commit crime etc, Abduction, Ill treatment and neglect of mental patients and vulnerable adults, Drugging, Slavery or forced labour and Human organ offences.

### **What we will do**

- We will continue to support the national No Knives Better Lives campaign ensuring that are young people understand the consequences of weapon carrying.

- We will carry out a profile of Inverclyde noting locations in Inverclyde where non-sexual crimes of violence and handling offensive weapons are more prevalent. This will help identify partnership interventions to help reduce violence.
- We will support partners within the Alcohol and Drugs Partnership identify opportunities through a prevention and education model where alcohol use and problem drug use is linked to violence.
- We will continue to promote the use of Crimestoppers and Fearless as opportunities for members of the public to report crime.

### **Theme- Violence Against Women**

Lead- Violence Against Women Multi Agency Partnership

#### **Evidence:**

- There were 112 incidents of domestic abuse recorded by the police in Inverclyde per 10,000 of the population in 2018/19. 40% of these incidents included at least one crime or offence.
- There were 112 incidents of domestic abuse recorded by the police in Scotland per 10,000 of the population in 2018/19. 41% of these incidents included a crime or offence.
- For incidents of domestic abuse recorded by the police per 10,000 of the population in 2018/19, Inverclyde is rated the 2<sup>nd</sup> lowest out of the 8 local authorities in the LGBF grouping by type of population.
- Where gender information was recorded, around four out of every five incidents of domestic abuse in 2018/19 had a female victim and a male accused in Scotland. This proportion has remained very stable since 2011/12.
- In 2018/19, 16% of domestic abuse incidents involved a male victim and a female accused (where gender was recorded). This proportion has remained stable since 2011/12 (ranging from 16% to 18%).

#### **What we will do**

- We will support communities in Inverclyde to embrace equality and mutual respect, and reject all forms of violence against women and girls. We will support this by;
  - promoting positive gender roles,
  - people enjoying healthy, positive relationships,
  - Children and young people developing an understanding of safe, healthy and positive relationships from an early age,
  - Individuals and communities recognising and challenging violent and abusive behaviour.
- We will support women and girls in Inverclyde to thrive as equal citizens: socially, culturally, economically and politically. We will support this by;
  - Women and girls being safe, respected and equal in our communities,
  - Women and men having equal access to power and resources.



- We will support interventions that are early and effective, prevent violence and maximise the safety and wellbeing of women, children and young people. We will have achieved this when;
  - Women, children and young people accessing relevant, effective and integrated services,
  - Service providers competently identifying violence against women and girls and responding effectively to women, children and young people affected.
- We will challenge men to desist from all forms of violence against women and girls and perpetrators of such violence receive a robust and effective response. We will do this by;
  - Ensuring justice responses are robust, swift, consistent and coordinated,
  - Identifying men early who carry out violence against women and girls and the criminal justice system holding them to account,
  - Making relevant links between the experience of women, children and young people in the criminal and civil system.

### **Theme- Antisocial Behaviour**

Lead- Coordinating Group

#### **Evidence:**

- There were 96 incidents of antisocial behaviour per 1,000 of the population in Inverclyde during 2018/19.
- There were 278 incidents of antisocial behaviour committed by youths per 1,000 of the population in Inverclyde during 2018/19.
- In the Scottish Household Survey 2018 (SHS) 94.4% of respondents from Inverclyde rated their neighbourhood as a very/fairly good place to live. The same indicator for Scotland is 94.6. Similarly in the Inverclyde Citizens' Panel, 86% of respondents rated their neighbourhood as a place to live as very satisfied/satisfied.
- In the Scottish Household Survey the percentage of people agreeing with statements about their neighbourhood strengths are as follows; 85% either strongly agreed or tended to agree that their neighbourhood is a place where people are kind to each other and 79% either strongly agreed or tended to agree that their neighbourhood is a place where most people can be trusted. The Scottish rate was 82% and 78% respectively.
- In the Citizens' Panel 90% of respondents said that they feel either fairly or very safe outside during the day, when asked how safe they feel in their neighbourhood outside at night, 68% of respondents stated either very or fairly safe.
- In the Citizens' Panel 10% of all respondents said that they had noticed a reduction in anti-social behaviour in their neighbourhood in the past 12 months. Forty one percent said that they had not noticed a reduction and 49% of respondents said that "Anti-social behaviour is not an issue in my neighbourhood".
- In the Our Place Our Future survey, of the 1310 responses, 23 people made comments about youths with the majority making comment in relation to young people committing antisocial behaviour or the fear of seeing large groups of youths.

- In 2018/19, Inverclyde was above the Scottish average for the percentage of attacks on SFRS personnel per number of all SFRS incidents.

#### **What we will do**

- We will introduce an Inverclyde Antisocial Behaviour Strategy during 2020 ensuring that Inverclyde Council and Police Scotland meet their legislative requirement under the Antisocial Behaviour etc. (Scotland) Act 2004.
- We will create an antisocial behaviour policy document setting out how partners will respond to antisocial behaviour in Inverclyde.
- We will plan a partnership response to large scale youth gatherings.

#### **Theme- Secondary Fire Raising**

Lead- Coordinating Group

#### **Evidence:**

- There were 45 deliberate secondary fires per 10,000 population attended by the SFRS in Inverclyde during 2018/19.
- Deliberate secondary fires accounted for 67% of all fires in Inverclyde in 2018/19.
- There were 23 deliberate secondary fires per 10,000 population attended by the SFRS in Scotland during 2018/19.
- Deliberate secondary fires accounted for 47% of all fires in Scotland in 2018/19.
- Inverclyde had the highest rate per 10,000 population of deliberate secondary fires in Scotland during 2018/19.

#### **What we will do**

- There will be an action plan detailing partnership responses into secondary fires that occur between April and June (quarter 1)
- We will plan a partnership response for the period leading up to and including the 5<sup>th</sup> November.

## OUTCOME 2- REDUCING UNINTENTIONAL HARM AND INJURY IN OUR COMMUNITIES

Unintentional Harm and Injury has been defined as predictable and preventable unintentional physical and psychological harm and within Inverclyde focuses on home safety, fire safety and road safety. Within Inverclyde we seek to improve partnership working to enhance home safety awareness, road safety awareness and fire safety awareness.

The Community Safety Partnership in this outcome will focus on dwelling fires, road safety, home safety and water safety.

### **Theme- Dwelling Fires**

Lead- CSP Coordinating Group

#### **Evidence:**

- There were 24 primary dwelling fires per 10,000 dwellings attended by the SFRS in Inverclyde during 2018/19.
- There were 20 primary dwelling fires per 10,000 dwellings attended by the SFRS in Scotland during 2018/19.
- In 2018/19, Inverclyde was rated 5<sup>th</sup> highest out of the 8 local authorities in the LGBF grouping by type of population for primary dwelling fires per 10,000 dwellings.
- The rate of dwelling fires is 4.5 times higher in the 20% least deprived areas of Scotland than the 20% most deprived.
- There were 52 fatal casualties per 1,000 accidental dwelling fires in Inverclyde during 2018/19.
- There were 8 fatal casualties per 1,000 accidental dwelling fires in Scotland during 2018/19.<sup>3</sup>
- In 2018/19, Inverclyde was rated highest out of the 8 local authorities in the LGBF grouping by type of population for fatal casualties per 1,000 accidental dwelling fires.
- There were 299 non-fatal casualties per 1,000 accidental dwelling fires in Inverclyde during 2018/19.
- There were 190 non-fatal casualties per 1,000 accidental dwelling fires in Scotland during 2018/19.
- In 2018/19, Inverclyde was rated 2<sup>nd</sup> highest out of the 8 local authorities in the LGBF grouping by type of population for non-fatal casualties per 1,000 accidental dwelling fires.
- Inverclyde is the second highest ranking local authority for the number of home fire safety visits as a percentage of the number of households (4.1%).

#### **What we will do:**

- We will offer experiential training to care providers across Inverclyde to help reduce the risk of our most vulnerable residents being involved in dwelling fires
- We will identify areas of Inverclyde where dwelling fires are above the Scotland and Inverclyde average and provide targeted responses particularly to those residents who are most vulnerable
- We will work with private landlords to ensure properties meet the required legal standard

- We will consider an Inverclyde approach to supporting residents ahead of mandatory fire detection in all homes following changes to legislation.

### **Theme- Water Safety**

Lead- Coordinating Group

#### **Evidence:**

- There were 27 incidents involving concern for person/s in a body of water between April 2014 and March 2019 in Inverclyde, as reported to Inverclyde Council, Police Scotland or SFRS.
- There were 3.84 rescue or evacuation from water incidents by the SFRS per 100,000 of the population in Inverclyde during 2018/19. All incidents involving concern for person/s in a body of water were attended by SFRS in 2018/19.
- There were 3.16 rescue or evacuation from water incidents by the SFRS per 100,000 of the population in Scotland during 2018/19.
- In 2018/19, Inverclyde was rated 2<sup>nd</sup> highest out of the 8 local authorities in the LGBF grouping by type of area for rescue or evacuation from water incidents by the SFRS.

#### **What we will do**

- We will create a water safety reference group outlining bodies of water in Inverclyde and partnership responses to water safety.

### **Theme- Road Safety**

Lead- Coordinating Group

#### **Evidence:**

- In 2018, the rate of reported accidents was 14.6 per 100 million vehicle km in Inverclyde.
- In 2018, the rate of reported accidents was 13.3 per 100 million vehicle km in Scotland.
- In 2018, Inverclyde was rated 2<sup>nd</sup> highest out of the 8 local authorities in the LGBF grouping by type of area for reported accidents per 100 million vehicle km.
- Of the reported accidents occurring in Inverclyde, 83% of casualties resided in Inverclyde and 6% resided in Renfrewshire, in 2018.
- In 2018, the rate of reported casualties injured in accidents was 1.23 per 1,000 population in Inverclyde.
- In 2018, the rate of reported casualties injured in accidents was 1.55 per 1,000 population in Scotland.
- In 2018, Inverclyde was rated 6<sup>th</sup> highest out of the 8 local authorities in the LGBF grouping by type of area for reported casualties injured in accidents per 1,000 population.
- In 2018, 18% of the reported casualties were seriously injured in accidents in Inverclyde and there were no fatalities.
- On average, 2 children, aged 0-15 years, have been seriously injured per year from 2014 to 2018 in Inverclyde.
- In 2018, 20% of the reported casualties injured in accidents in Inverclyde were pedestrians.

- In the Our Place Our Future survey, there were comments made in relation to vehicles parking on pavements, some comments in relation to parking on pavements near early year's centres/schools. In addition to this there were a handful of comments in relation to making streets safer by reduced speed limits/enhanced safety measures.

#### **What we will do**

- Commitment to the continued existence of the Schools Road Safety Working Group.
- Raise awareness of the forthcoming legislation on pavement parking.
- Raise awareness of the Scottish Government Framework for Road Safety up to 2030.
- To continue to provide a Road Safety Education Programme.

#### **Home Safety**

Lead- Coordinating Group

#### **Evidence:**

- There were 8.8 emergency admissions to hospital as a result of a fall in Inverclyde per 1,000 of the population in 2018/19\*, when considering all ages.
- For ages 85+, there were 65.5 emergency admissions to hospital as a result of a fall in Inverclyde per 1,000 of the population in 2018/19.
- There were 6.9 emergency admissions to hospital as a result of a fall in Scotland per 1,000 of the population in 2018/19, when considering all ages.
- For ages 85+, there were 69.6 emergency admissions to hospital as a result of a fall in Scotland per 1,000 of the population in 2018/19.
- For emergency admissions to hospital as a result of a fall per 1,000 of the population in the age 85+ bracket, Inverclyde was rated 5<sup>th</sup> highest out of the 8 local authorities in the LGBF grouping by type of population in 2018/19.

\*provisional figures for 2018/19 Revised publication - Summary of emergency admissions for unintentional injuries resulting from a fall up to March 2019 (ISD, 27/8/2019).

#### **What we will do**

- We will create a home safety reference group home safety concerns in Inverclyde and partnership responses to home safety.

## **OUTCOME 3- BUILDING RESILIENT COMMUNITIES**

The Community Safety Partnership want all residents of Inverclyde to live in friendly, vibrant and cohesive communities which value diversity and support those in need. We want to encourage and support our communities to ensure they are resilient, safe and have low levels of crime.

The Community Safety Partnership in this outcome will support work on neighbourhood watch, an area based initiative called 'Improving Inverclyde', the continued work in the Mentors in Violence Prevention approach, supporting those at risk of hate crime and extremism, supporting the work of Crimestoppers and their youth version 'Fearless', ensuring that our children and young people are safe from sexual exploitation and supporting our communities through locality planning.

### **Theme- Neighbourhood Watch/Neighbourhood Alert Scheme**

Lead- Coordinating Group

#### **Evidence:**

- As of April 2020 there are 32 registered Neighbourhood Watch Schemes in Inverclyde (membership ranges from individual streets to neighbourhood areas to as wide as community council areas).
- As of April 2020 there are approximately 150 individuals signed up to receive updates via the Neighbourhood Alert Scheme.

#### **What we will do**

- We will continue to support communities across Inverclyde create Neighbourhood Watch Schemes
- We will work with Neighbourhood Watch Scotland to introduce the Neighbourhood Alert Scheme in Inverclyde.
- We will work with surrounding community safety partnership to consider the roll out of a rural watch scheme.

### **Theme- Improving Inverclyde Initiative**

Lead- Coordinating Group

#### **Evidence:**

- Police Scotland, Inverclyde Council and the Violence Reduction Unit jointly developed the idea of an area based pilot initiative.
- Assessment based on the triple criteria of crime statistics, SIMD outcomes and existing community engagement and capacity identified Port Glasgow as being the most appropriate area for the pilot

#### **What we will do**

- We will introduce the Improving Inverclyde Initiative to the Port Glasgow area during 2020

### **Theme- Mentors in Violence Prevention**

Lead- Violence Against Women Multi Agency Partnership

#### **Evidence:**

- Mentoring in Violence Prevention (MVP) is a partnership approach, based in schools, which aims to promote positive relationships and reduce violence, particularly gender-based violence and bullying. It utilises a creative bystander approach where males and females are not looked on as potential victims or perpetrators but as empowered and active bystanders who have the ability to support and challenge peers.
- In 2018/19 MVP mentor sessions were delivered to 5 secondary schools to 85 pupils.

#### **What we will do**

- We will continue to support our young people by offering the Mentors in Violence Prevention programme across all secondary schools in Inverclyde.

### **Theme- Hate Crime Awareness**

Lead- Coordinating Group

#### **Evidence:**

- The number of reported hate incidents recorded in 2018/19 accounts for 0.2% of all incidents recorded by Police Scotland in Inverclyde.
- In 2018/19, the rate of reported hate incidents in Inverclyde was 5 per 10,000 of the population.

#### **What we will do**

- We will support local partners to create an Inverclyde hate crime awareness group to ensure our vulnerable communities and those at risk of extremism are supported.
- Where hate crime issues are identified, we will support communities in creating a forum for inter community discussion in Inverclyde.
- Equality & Diversity will be embedded in every aspect of community safety planning in Inverclyde to promote positive relationships and community cohesion.

### **Theme- Locality Planning (Community Safety Themes)**

Lead- Coordinating Group

#### **Evidence:**

- A series of six locality engagement events were held during August and September 2019, "Celebrate the Present, Shape the Future". The purpose of the events was to begin building positive relationships with communities by giving local people the opportunity to celebrate and recognise what is good about their area and discuss the key issues and priorities to inform the development of locality plans. Across the events attendees have raised issues of community safety within their locality.

## **What we will do**

- We will support locality partnerships across Inverclyde in responding to community safety issues that impact localities and their communities.

## **Theme- Crimestoppers / Fearless**

Lead- Coordinating Group

### **Evidence:**

- Crimestoppers are an independent charity that gives people the power to speak up to stop crime.
- Fearless is a service for young people to allow them to pass information on about crime anonymously.

## **What we will do**

- We will work with Crimestoppers to introduce an Inverclyde wide campaign in 2020.

## **Theme- Child Protection Responsibilities**

Lead- Coordinating Group

### **Evidence:**

- The number of Group 2 sexual crimes\* recorded in 2018/19 accounts for 5% of all crimes recorded in Inverclyde.
- In 2018/19 the rate of Group 2 sexual crimes in Inverclyde decreased to 20.9 per 10,000 of the population.
- In 2018/19, the rate of Group 2 sexual crimes increased to 24.9 per 10,000 of the population in Scotland.
- In 2018/19, Inverclyde was rated 4<sup>th</sup> highest out of the 8 local authorities in the LGBF grouping by type of population for Group 2 sexual crimes per 10,000 of the population.
- At least 30% of sexual crimes in Inverclyde related to a victim under the age of 18 in 2018/19.

\* Group 2 crimes includes Rape, Attempted rape, Contact sexual assault, Sexually coercive conduct, Sexual crimes against children under 13 years, Lewd and libidinous practices, Crimes relating to prostitution, Soliciting services of person engaged in prostitution, Brothel keeping, Immoral traffic, Procuration, Other sexually coercive conduct, Other sexual crimes involving 13-15 year old children, Taking, distribution, possession etc. of indecent photos of children, Incest, Unnatural crimes, Public indecency, Sexual exposure, Threatening to disclose an intimate image, Disclosure of an intimate image, Communications Act 2003 (sexual) and Other sexual crimes.

## **What we will do**

- We will work community safety partners and the Inverclyde Child Protection Committee to identify training with night time economy providers in order to have safeguarded measures which will help keep children safe from [sexual] exploitation.



## **COVID-19 PANDEMIC**

Preparation for this document started prior to the emergence of the Covid-19 pandemic and given the significant impact it has had in Inverclyde, the Community Safety Partnership recognise that the work of community safety partners will require change as part of a covid-19 recovery plan.

All key themes, outcomes and improvement actions have been considered in light of the pandemic and there is confirmation from all partners of their continued commitment to the CSP Strategic Outcomes and their commitment of adequate resources for the delivery of the improvement actions in line with the strategy priorities.

In addition to this the CSP have identified additional themes which will be progressed during the lifespan of the document.

## MEASURING OUR PROGRESS

In order to measure our progress in achieving the community safety outcomes we will use a range of indicators. These outcome measures will be monitored on an ongoing basis and reported to the Inverclyde Community Safety Partnership Strategy Group and Inverclyde Alliance. In addition to this more detailed indicators and improvement actions are regularly reported to the Inverclyde Community Safety Partnership Coordinating Group and Inverclyde Violence Against Women Multi-Agency Partnership.

In respect of locality planning it is expected that community safety issues will be raised as the locality partnerships are established across Inverclyde.

<b>Violence Against Women</b>	
Measurement	Source
Incidents of domestic abuse recorded in Inverclyde per 10,000 of the population.	Police Scotland
Incidents of domestic abuse recorded in Inverclyde where a crime or offence has been recorded.	Police Scotland
Incidents of domestic abuse recorded in Scotland per 10,000 of the population.	Police Scotland
Incidents of domestic abuse recorded in Scotland where a crime or offence has been recorded.	Police Scotland
Numbers of women and children supported for Domestic Abuse	Inverclyde Women's Aid
Numbers of women supported for Sexual Abuse	Inverclyde Women's Aid
Numbers of referrals for women, women with children and men discussed at Multi Agency Risk Assessment Conference	Inverclyde Council

<b>Antisocial Behaviour</b>	
Measurement	Source
Incidents of antisocial behaviour per 1,000 of the population in Inverclyde	Inverclyde Council
Incidents of antisocial behaviour committed by youths per 1,000 of the population	Inverclyde Council
Inverclyde rating of neighbourhood as being very/fairly good place to live	Scottish Household Survey
Scotland rating of neighbourhood as being very/fairly good place to live	Scottish Household Survey
Percentage of people agreeing with statements about their neighbourhood strengths- This is a neighbourhood where people are kind to each other (Strongly agree/tend to agree)	Scottish Household Survey
Percentage of people agreeing with statements about their neighbourhood strengths- This is a neighbourhood where most people can be trusted (Strongly agree/tend to agree)	Scottish Household Survey

How satisfied are you with Inverclyde as a place to live?	Inverclyde Citizens' Panel
How satisfied are you with your neighbourhood as a place to live?	Inverclyde Citizens' Panel
How concerned are you about the following issues in your neighbourhood?	Inverclyde Citizens' Panel
How safe do you feel in your neighbourhood? Outside during the day	Inverclyde Citizens' Panel
How safe do you feel in your neighbourhood? Outside at night	Inverclyde Citizens' Panel
How often have you felt unsafe in your neighbourhood in the past year?	Inverclyde Citizens' Panel
Have you or anyone in your household been a victim of crime or anti-social behaviour in the last 12 months?	Inverclyde Citizens' Panel
Have you noticed a reduction in anti-social behaviour in your neighbourhood in the past 12 months?	Inverclyde Citizens' Panel

<b>Secondary Fire Raising</b>	
Measurement	Source
deliberate secondary fires per 10,000 population in Inverclyde attended by the SFRS	Scottish Fire & Rescue Service
Deliberate secondary fires against all fires in Inverclyde (%)	Scottish Fire & Rescue Service
deliberate secondary fires per 10,000 population in Scotland attended by the SFRS	Scottish Fire & Rescue Service
Deliberate secondary fires against all fires in Scotland (%)	Scottish Fire & Rescue Service

<b>Violence</b>	
Measurement	Source
The number of Group 1 non-sexual crimes of violence <sup>1</sup> recorded in 2018/19 against all crimes recorded in Inverclyde.	Police Scotland
The rate of Group 1 non-sexual crimes of violence per 10,000 of the population in Inverclyde.	Police Scotland
The rate of Group 1 non-sexual crimes of violence per 10,000 of the population in Scotland.	Police Scotland
The rate of Handling offensive weapons per 10,000 of the population in Inverclyde.	Police Scotland
The rate of Handling offensive weapons per 10,000 of the population in Scotland.	Police Scotland
The percentage of handling an offensive weapon involving a bladed weapon	Police Scotland

<b>Primary Dwelling Fires</b>	
Measurement	Source
Primary dwelling fires per 10,000 dwellings attended by the SFRS in Inverclyde	Scottish Fire & Rescue Service
Primary dwelling fires per 10,000 dwellings attended by the SFRS in Scotland	Scottish Fire & Rescue Service
The rate of dwelling fires in the 20% least deprived areas of Scotland than the 20% most deprived.	Scottish Fire & Rescue Service
Fatal casualties per 1,000 accidental dwelling fires in Inverclyde	Scottish Fire & Rescue Service
Fatal casualties per 1,000 accidental dwelling fires in Scotland	Scottish Fire & Rescue Service
Non-fatal casualties per 1,000 accidental dwelling fires in Inverclyde	Scottish Fire & Rescue Service
Non-fatal casualties per 1,000 accidental dwelling fires in Scotland	Scottish Fire & Rescue Service
Number of home fire safety visits as a percentage of the number of households	Scottish Fire & Rescue Service

<b>Water Safety</b>	
Measurement	Source
Incidents involving concern for person/s in a body of water in Inverclyde, as reported to Inverclyde Council, Police Scotland or SFRS.	Inverclyde Council Police Scotland Scottish Fire & Rescue Service
Rescue or evacuation from water incidents by the SFRS per 10,000 of the population in Inverclyde.	Scottish Fire & Rescue Service
Rescue or evacuation from water incidents by the SFRS per 10,000 of the population in Scotland.	Scottish Fire & Rescue Service

<b>Road Safety</b>	
Measurement	Source
The rate of reported accidents was per 100 million vehicle km in Inverclyde.	Transport Scotland
The rate of reported accidents was per 100 million vehicle km in Scotland.	Transport Scotland
Reported accidents occurring in Inverclyde, with casualties resided in Inverclyde	Transport Scotland
The rate of reported casualties injured in accidents per 1,000 population in Inverclyde.	Transport Scotland
The rate of reported casualties injured in accidents per 1,000 population in Scotland.	Transport Scotland
Percentage of reported casualties killed or seriously injured in Inverclyde	Transport Scotland
Aged 0-15 years have been seriously injured in Inverclyde.	Transport Scotland

Reported casualties and percentage of pedestrians.	Transport Scotland
--	--------------------

<b>Neighbourhood Watch</b>	
Measurement	Source
The number of Neighbourhood Watch Schemes in Inverclyde	Neighbourhood Watch Scotland
The number of individuals signed up to Neighbourhood Alert Scheme	Neighbourhood Watch Scotland

<b>Hate Crime</b>	
Measurement	Source
The number of reported hate incidents recorded accounting of all incidents recorded by Police Scotland in Inverclyde.	Police Scotland
The rate of reported hate incidents in Inverclyde	Police Scotland