

KEY

PLANNING POLICY STATEMENT - OUR HOMES AND COMMUNITIES

- Residential Development Opportunity

POLICY B

Residential Development - commenced

POLICY B

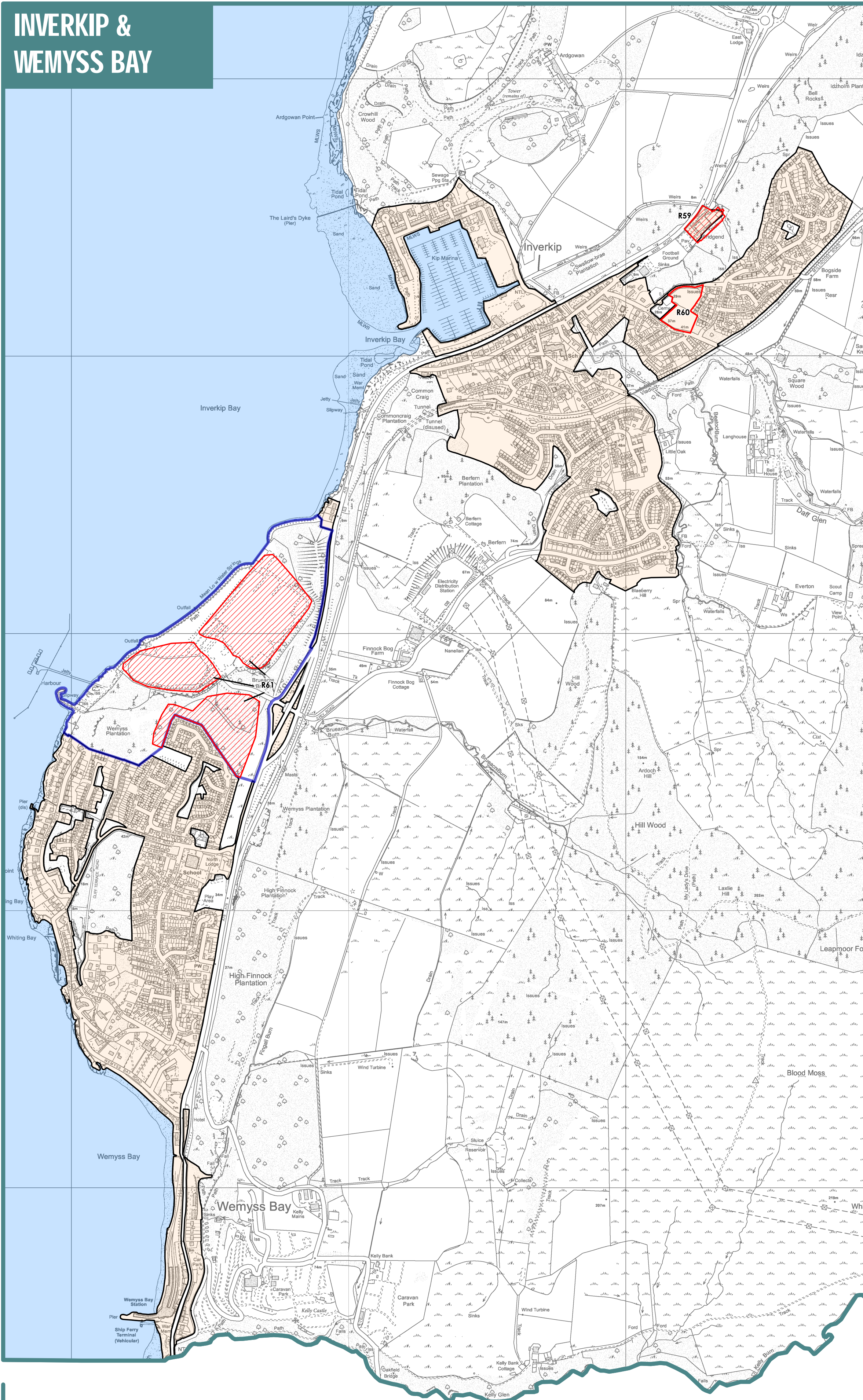
Residential Area

POLICY D

Priority Places
(see 2019 LDP and draft Supplementary Guidance)





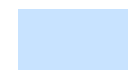
River Clyde / Firth of Clyde
- These maps should be used in conjunction with the adopted Inverclyde Local Development Plan 2019
- Inverclyde council SCALE 1:10,000
- This map is reproduced from Ordnance Survey material with the permission of Ordnance Survey on behalf of the Controller of Her Majesty's Stationery Office. (c) Crown Copyright. Unauthorised reproduction infringes Crown copyright and may lead to prosecution or civil proceedings. (100023413) 2020
-
-

INVERKIP & WEMYSS BAY



KEY

PLANNING POLICY STATEMENT - OUR HOMES AND COMMUNITIES

- | | | |
|---|--|----------|
|  | Residential Development Opportunity | POLICY B |
|  | Residential Development - commenced | POLICY B |
|  | Residential Area | POLICY D |
|  | Priority Places
(see 2019 LDP and draft Supplementary Guidance) | |
|  | River Clyde / Firth of Clyde | |

These maps should be used in conjunction with the adopted Inverclyde Local Development Plan 2019

Inverclyde council

SCALE 1:10,000



This map is reproduced from Ordnance Survey material with the permission of Ordnance Survey on behalf of the Controller of Her Majesty's Stationary Office.
© Crown Copyright. Unauthorised reproduction infringes Crown copyright and may lead to prosecution or civil proceedings. (10002427) (2005)

KILMACOLM & QUARRIERS VILLAGE

