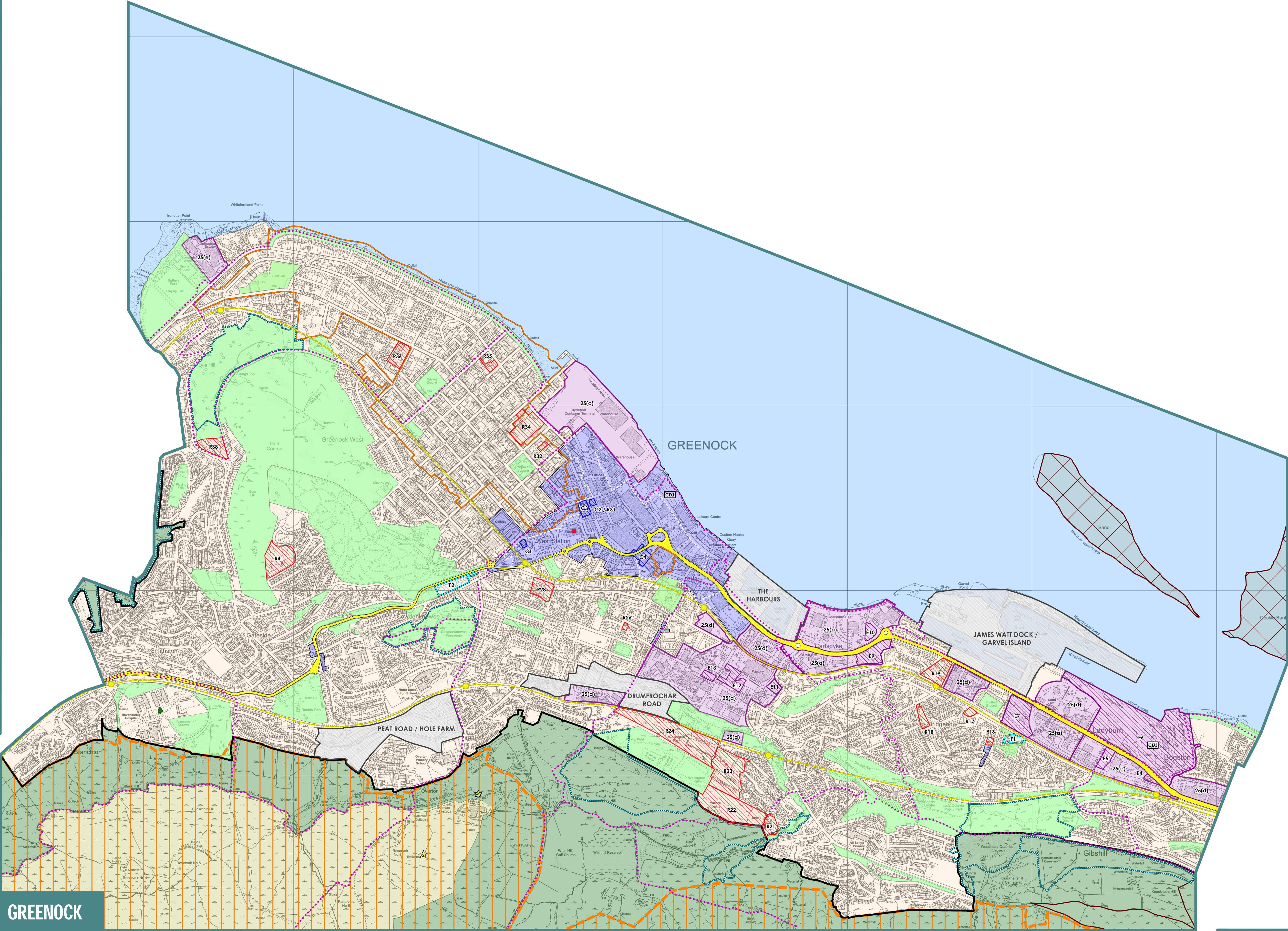


# LOCAL DEVELOPMENT PLAN

## PROPOSED PLAN 2021



### KEY

#### SUSTAINABLE DEVELOPMENT STRATEGY

- |                                     |          |
|-------------------------------------|----------|
| Glasgow City Region City Deal Sites | POLICY 2 |
| CD1 Greenock Ocean Terminal         |          |
| CD2 Inchgreen                       |          |

- |                |          |
|----------------|----------|
| Priority Place | POLICY 3 |
|----------------|----------|

#### CONNECTING PEOPLE AND PLACES

- |                   |           |
|-------------------|-----------|
| Trunk Road        | POLICY 12 |
| Railway / Station | POLICY 12 |
| Bus Station       | POLICY 12 |

#### OUR TOWNS, VILLAGES AND COUNTRYSIDE

- |             |                  |
|-------------|------------------|
| Green Belt  | POLICIES 15 & 19 |
| Countryside | POLICIES 15 & 19 |

#### OUR HOMES AND COMMUNITIES

- |                                 |           |
|---------------------------------|-----------|
| Housing Development Opportunity | POLICY 18 |
| Residential Area                | POLICY 20 |
| Community Facility Opportunity  | POLICY 22 |

#### OUR TOWN AND LOCAL CENTRES

- |                                   |           |
|-----------------------------------|-----------|
| Town Centre / Local Centre        | POLICY 23 |
| Greenock Town Centre Central Area | POLICY 23 |
| Network of Centres Opportunity    | POLICY 23 |

#### OUR JOBS AND BUSINESSES

- |   |           |
|---|-----------|
| Business & Industrial Area                    | POLICY 25 |
| Business & Industrial Development Opportunity | POLICY 26 |

#### OUR HISTORIC BUILDINGS AND PLACES

- |                    |           |
|--------------------|-----------|
| Conservation Area  | POLICY 28 |
| Scheduled Monument | POLICY 31 |

#### OUR NATURAL AND OPEN SPACES

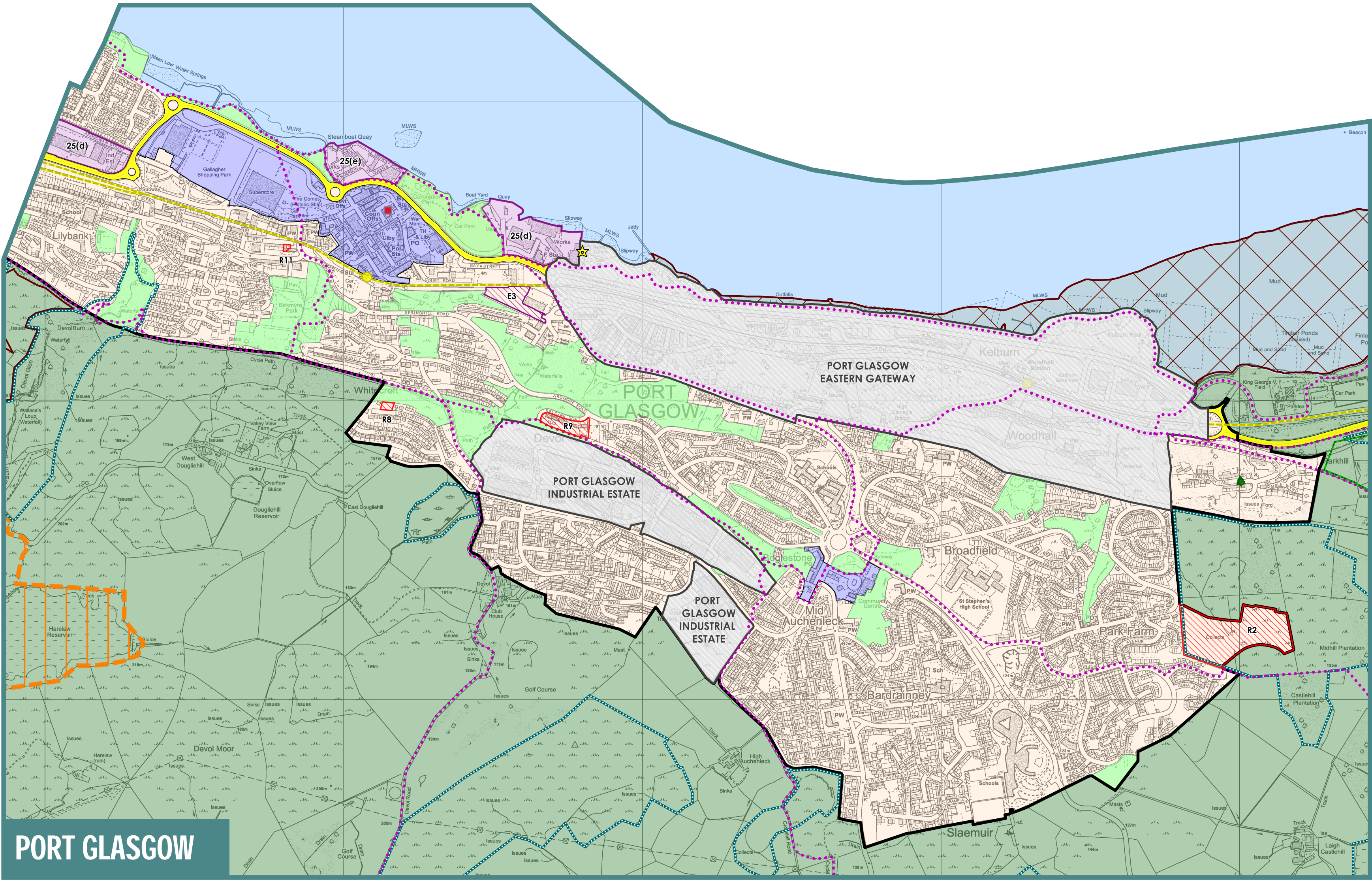
- |                                       |           |
|---------------------------------------|-----------|
| Special Protection Area / Ramsar Site | POLICY 33 |
| Site of Special Scientific Interest   | POLICY 33 |
| Local Nature Conservation Site        | POLICY 33 |
| Tree Preservation Order               | POLICY 35 |
| Open Space                            | POLICY 36 |
| Core Path                             | POLICY 36 |
| Clyde Muirshiel Regional Park         | POLICY 38 |
| River Clyde / Firth of Clyde          |           |

Inverclyde council SCALE 1:10,000

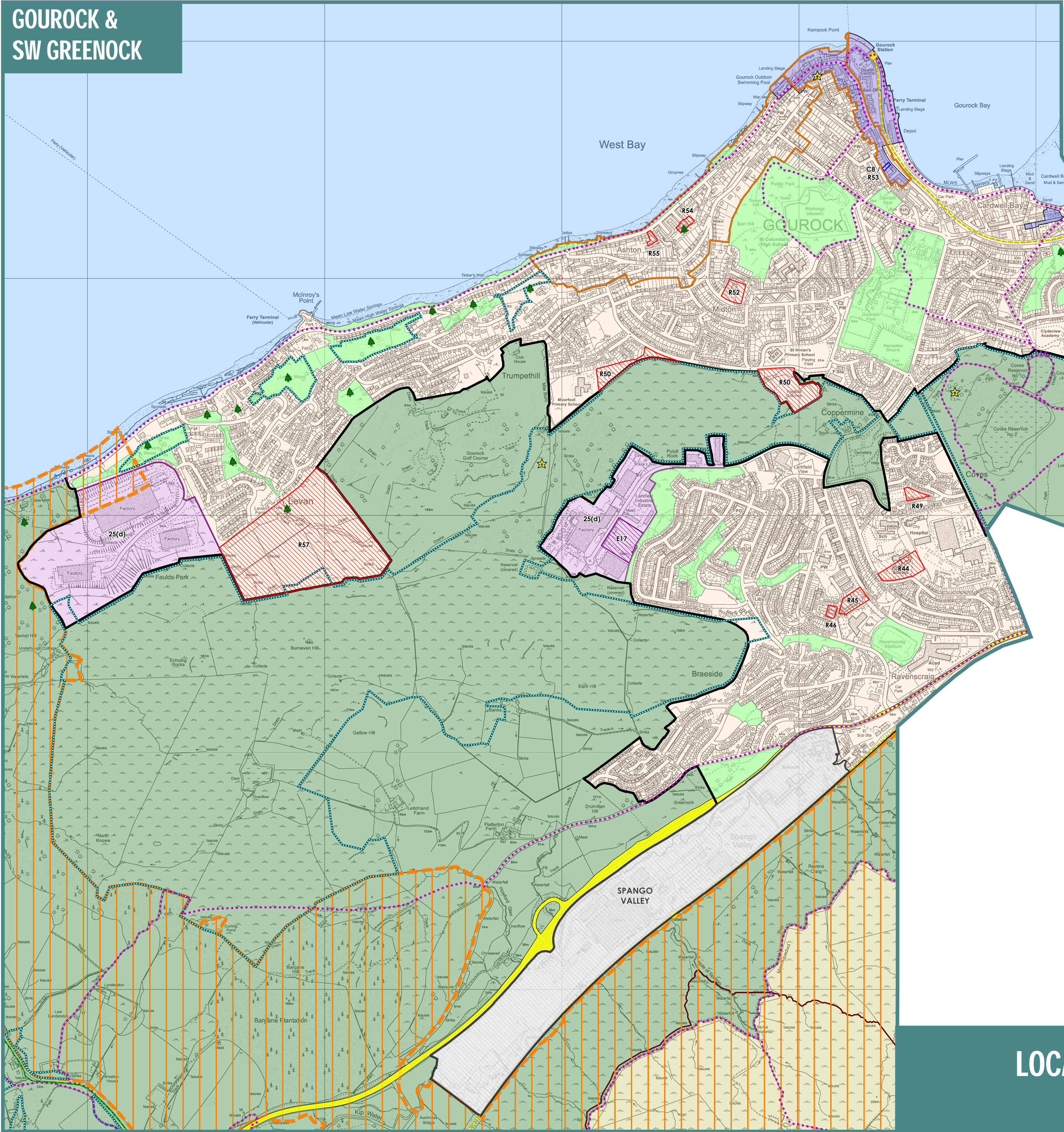
This map is reproduced from Ordnance Survey material with the permission of Ordnance Survey on behalf of the Controller of Her Majesty's Stationery Office.  
© Crown Copyright. Unauthorised reproduction infringes Crown copyright and may lead to prosecution or civil proceedings. (100023421) (2017)







PORT GLASGOW

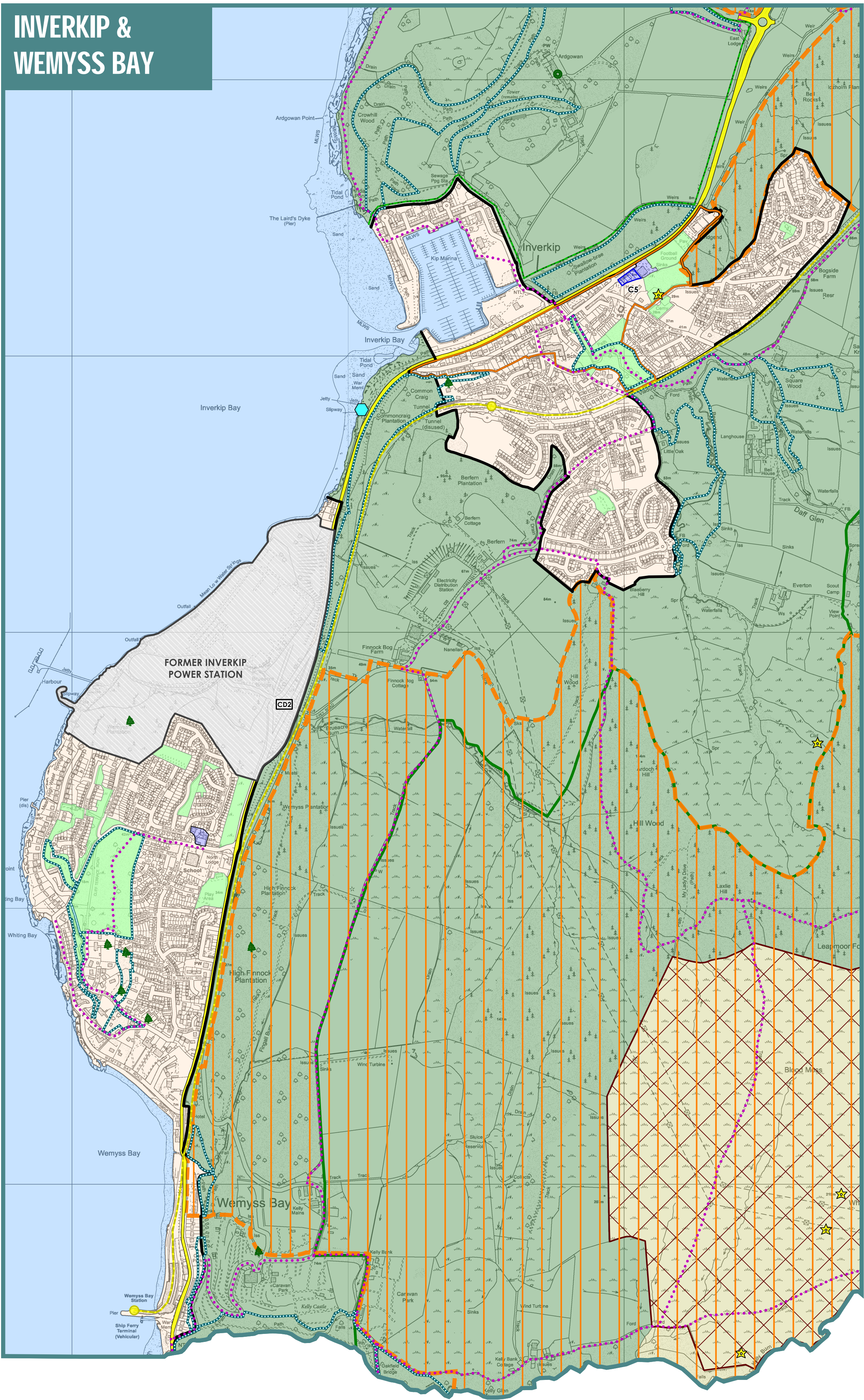


GOUROCK & SW GREENOCK

KEY		
SUSTAINABLE DEVELOPMENT STRATEGY		
	Priority Place	POLICY 3
CONNECTING PEOPLE AND PLACES		
	Trunk Road	POLICY 12
	Railway / Station	POLICY 12
	Bus Station	POLICY 12
OUR TOWNS, VILLAGES AND COUNTRYSIDE		
	Green Belt	POLICIES 15 & 19
	Countryside	POLICIES 15 & 19
OUR HOMES AND COMMUNITIES		
	Housing Development Opportunity	POLICY 18
	Residential Area	POLICY 20
OUR TOWN AND LOCAL CENTRES		
	Town Centre / Local Centre	POLICY 23
	Network of Centres Opportunity	POLICY 23
OUR JOBS AND BUSINESSES		
	Business & Industrial Area	POLICY 25
	Business & Industrial Development Opportunity	POLICY 26
OUR HISTORIC BUILDINGS AND PLACES		
	Conservation Area	POLICY 28
	Scheduled Monument	POLICY 31
	Gardens & Designed Landscapes	POLICY 32
OUR NATURAL AND OPEN SPACES		
	Special Protection Area / Ramsar Site	POLICY 33
	Site of Special Scientific Interest	POLICY 33
	Local Nature Conservation Site	POLICY 33
	Tree Preservation Order	POLICY 35
	Open Space	POLICY 36
	Core Path	POLICY 36
	Clyde Muirshiel Regional Park	POLICY 38
	River Clyde / Firth of Clyde	



# INVERKIP & WEMYSS BAY



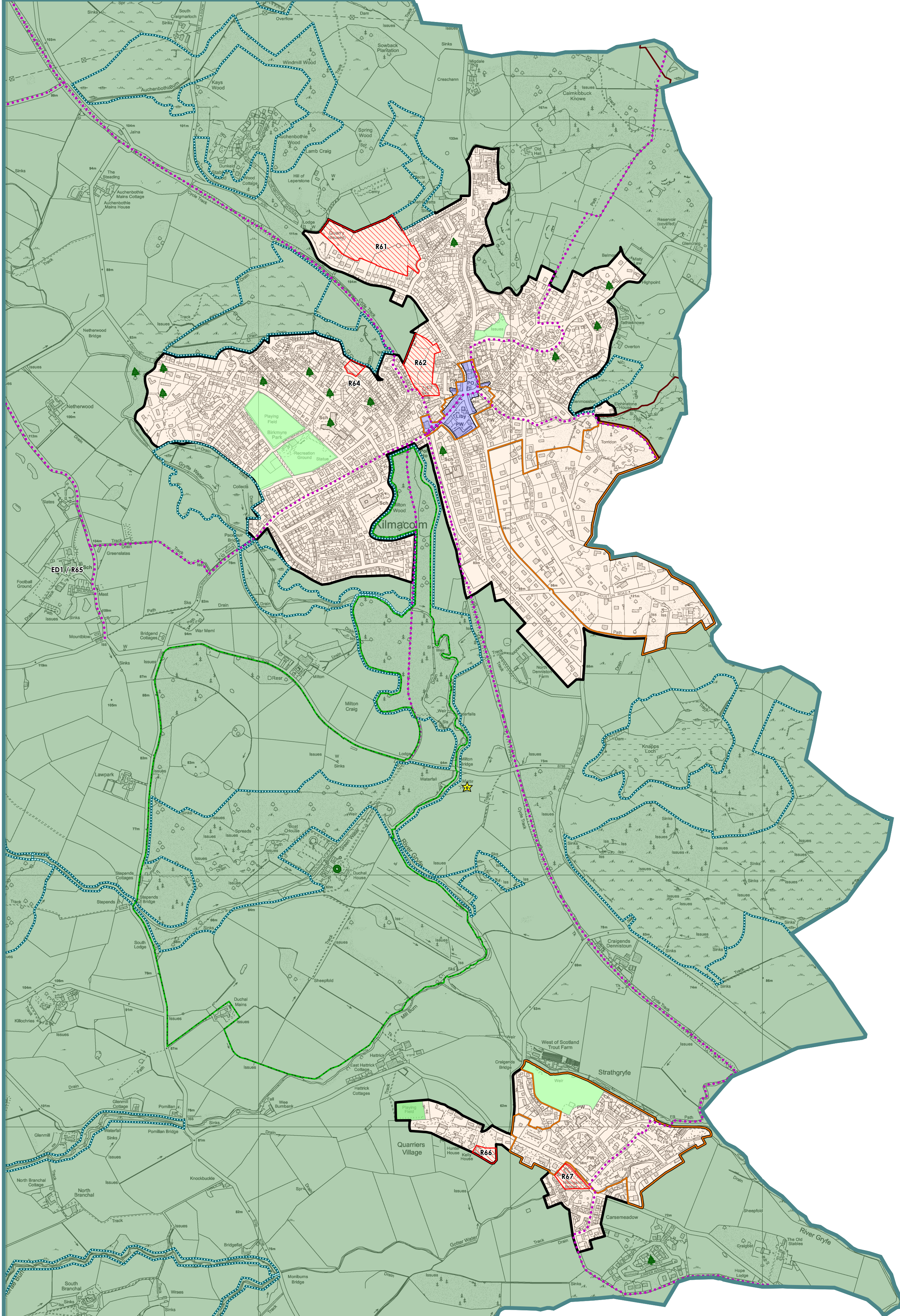
## KEY

SUSTAINABLE DEVELOPMENT STRATEGY	
Glasgow City-Region City Deal Sites	POLICY 2
Inverkip Infrastructure	
Priority Place	POLICY 3
CONNECTING PEOPLE AND PLACES	
Trunk Road	POLICY 12
Railway / Station	POLICY 12
OUR TOWNS, VILLAGES AND COUNTRYSIDE	
Green Belt	POLICIES 15 & 19
Countryside	POLICIES 15 & 19
OUR HOMES AND COMMUNITIES	
Housing Development Opportunity	POLICY 18
Residential Area	POLICY 20
OUR TOWN AND LOCAL CENTRES	
Town Centre / Local Centre	POLICY 23
Network of Centres Opportunity	POLICY 23
OUR JOBS AND BUSINESSES	
Business & Industrial Area	POLICY 25
Business & Industrial Development Opportunity	POLICY 26
OUR HISTORIC BUILDINGS AND PLACES	
Conservation Area	POLICY 28
Scheduled Monument	POLICY 31
Gardens & Designed Landscapes	POLICY 32
OUR NATURAL AND OPEN SPACES	
Special Protection Area / Ramsar Site	POLICY 33
Site of Special Scientific Interest	POLICY 33
Local Nature Conservation Site	POLICY 33
Local Nature Conservation Site (Geological)	POLICY 33
West Renfrew Hills Local Landscape Area	POLICY 34
Tree Preservation Order	POLICY 35
Open Space	POLICY 36
Core Path	POLICY 36
Clyde Muirshiel Regional Park	POLICY 38
River Clyde / Firth of Clyde	

Inverclyde council SCALE 1:10,000

This map is reproduced from Ordnance Survey material with the permission of Ordnance Survey on behalf of the Controller of the Majesty's Stationery Office.  
(c) Crown Copyright. Unauthorised reproduction infringes Crown copyright and may lead to prosecution or civil proceedings. (100024213) (2019)

# KILMACOLM & QUARRIERS VILLAGE



## LOCAL DEVELOPMENT PLAN PROPOSED PLAN 2021



INDEX MAP &  
RURAL AREA

