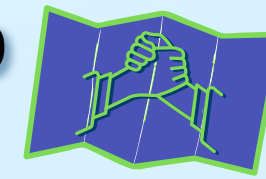


Inverclyde Warm Spaces & Activities Map



Wemyss Bay, Inverkip, Gourock, Branchton

Skelmorlie and Wemyss Bay Church

07739901598

rita.carmichael@btinternet.com
Shore Road, Skelmorlie, PA17 5DY

Friendship Circle - fortnightly from Tues 27th Sep, 2pm-4pm
Everyone welcome for coffee, cake and a chat

Inverkip Church

01475 520 975

07899092492

bensonamber@yahoo.co.uk
Inverkip Church Hall, Bonomy Room, Langhouse Road

Guild Meeting - first Monday of the month from October 3rd
Rural Meeting - fourth Monday of the month

Both welcoming everyone for a cuppa and participation in planned events, both meetings 2pm-4pm

Drop in Cafe - Second and Third Mondays of the month 12-2pm, light lunch provided

Inverkip Hub

01475 520 740

info@inverkiphub.org.uk
2 Kip Park, Main Street Inverkip

A huge variety of activities on offer - from walking football to a knit-and-natter, get in touch for more info

Inverkip & Wemyss Bay Library

01475 715676

Inverkip Community Hub, Main Street, Inverkip

Mon & Thurs 12pm-7pm
Tues & Fri 10am-5pm
Wed & Sat 10am-1pm

Ongoing children and adult events and activities, all free and open to all - pop in for more details

Inverkip SWI

Crawford Memorial Hall
Langhouse Road, Inverkip

Monthly Branch Meetings
Mondays 2pm

Visitors can come along and pay £3.00 and enjoy fellowship, coffee, tea and biscuits

Bowl & Blether St John's

GWGEngagementGroup@gmail.com

Saint John's Road, Gourock
PA19 1PA

First Monday of the month
11:30am-1:30pm
St John's Church, Gourock
Reduce social isolation and enjoy a warm space with delicious soup and toasties!
All welcome, no cost, no membership fee

Gourock Library

01475 712340

Kempock Place, Gourock

Mon & Thurs 12pm-7pm
Tues & Fri 10am-5pm
Wed & Sat 10am-1pm

Ongoing children and adult events and activities, all free and open to all - pop in for more details

Coppermine Community Centre

07984 992 178

1 Kirn Drive, Gourock, PA19 1EQ

Bowl & Blether - soup and a chat, Tuesdays 11:30am-1:30pm throughout the Winter

Home Instead Memory Cafe

info@greenock.homeinstead.co.uk

4 King St, Gourock PA19 1PU

Memory Cafe - monthly Wednesdays from 7th Sept, 1-3pm,
Gourock Community Baptist Church
Music, dancing, activities, refreshments
Friendship & emotional support for people with memory loss & their carers

Inverclyde Vineyard

www.inverclydevineyard.org.uk
Coppermine Community Centre, Kirn Drive, Gourock (opposite St Ninian's PS)

Sunday Morning Service - Sundays 10:30-11:30am
Cafe - Sundays (apart from last Sunday of the month) from 10:15am - free hot drinks, pastries and fruit
New people from all backgrounds and families with children all most welcome

Silverline Dancers

07507 514 118

kath.bowes@gmail.com

Over 60s Line-Dance Group - promoting physical and mental health and well-being, combat social isolation in a fun and friendly environment

Branchton Community Centre

01475 638 481

branchtonmanager@gmail.com
Branchton Rd, Greenock PA16 0XU

Over 55's Exercise and Movement Class - Thursday 11:45-12:30pm

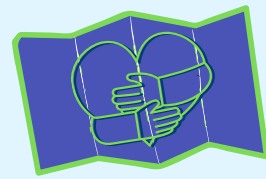
Branchton Centre Youth - Mon & Wed, 6:00pm-7:30pm (8-11 years)/ 7:45pm-9:30pm (12+years)

St Margaret's Church (Finch Road)

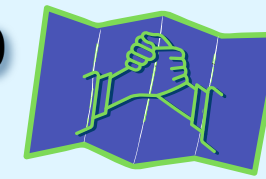
tpeterson@churchofscotland.org.uk

67 Finch Rd, Greenock PA16 7DE

Bowl & Blether - second Saturday of the month, from 11:30am - soup, tea/coffee, friendly chat. Soup served from 12:30-1:30pm



Inverclyde Warm Spaces & Activities Map



Greenock West and Central

South West Library

01475 715667

Barr's Cottage, Greenock

Mon & Thurs 12pm-7pm

Tues & Fri 10am-5pm

Wed & Sat 10am-1pm

Ongoing children and adult events and activities, all free and open to all - pop in for more details

Westburn Church

01475 720 257

9 Nelson Street, Greenock, PA15 1TP

Messy Church - Second Saturday of the month, 4pm-6pm - crafts, games, stories and singing
Refreshments throughout, finished off with a chat and a meal together
All very welcome!

Guides, Brownies, Cubs, and Scouts - get in touch for more info on these groups

Lyle Gateway

01475 722694

office@lylekirk.org

31 Union St, Greenock, PA16 8DD

Light Exercise - Tues & Thurs
10:30am-1:30pm, Chair Exercises, Curling, Short Mat Bowls, Table Tennis,

Games - Scrabble, cards or Bridge
Book Club - first Tues of the month, 10:30am

Cafe - tea/coffee, juice, biscuits, soup, toasties and filled rolls

Soup, Blether & A Film - TBC
Everyone welcome!

Ardgowan Square Evangelical Church

info@ardgowanchurch.org.uk
25 Ardgowan Square, Greenock, PA16 8NH

After School Kids Craft Club -
Wednesdays from 3pm, teas & coffees for accompanying adults

Move It or Lose It

07811 766672

fiona.bretherton@moveitorloseit.co.uk

9 Nelson Street, Greenock, PA15 1TP

Easy-to-follow exercises for over 60s, seated or standing. Flexibility, Aerobic Health, Balance and Strength (FABS) Exercises, with music to spark memories!

The Trust - "Bookwarm"

Westburn Centre,
175 Dalrymple St, Greenock, PA15 1JZ

Thursdays - Warm space with activities such as books, jigsaws, colouring, board games.
Warm drinks and snacks provided

Man On Inverclyde

01475 910258 (Mon-Thurs)
30 Nelson Street, Greenock, PA15 1QH

Heat and Eat - Every Wednesday from 12/10/22
9:30am-1:30pm. Pop by whenever suits during these times for hot drinks, soup & sandwiches in a warm, friendly space. No need to sign up or have used our services before - everyone welcome!

Greenock iYouth Zone

01475 715422

34 Nicolson St, Greenock, PA15 1UL

Monday - LGBT Group: 5-6pm
Drop-In (12-17 years): 7-9:30pm

Tuesday - WorX Club: 2-3:30pm
Youth Council: 4:30-6pm
Drop-In (16 years+): 7-9:30pm

Thursday - Steering Group Meeting: 6pm-7pm (last Thurs of the month)
Drop-In (12-17 years): 7-9:30pm

Friday: Drop-In (P7s): 7-9pm

Struthers Memorial Church

01475 729 668

smc@struthers-church.org
10a Jamaica St, Greenock

New Dawn Bookshop Coffee Shop, open Tues-Sat 10am-4:30pm

Hope Community Church

01475 787177

office@hopeinverclyde.com
44 Kelly St, Greenock, PA16 8TR

Hope Tots - Mondays 10am-12pm (excluding bank and public holidays) Baby & Toddler Group - a range of toys and activities suitable for babies and pre-school children in a safe, warm environment

Barnardo's

01475 783317

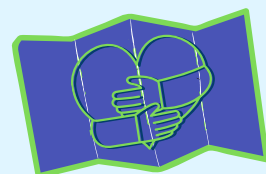
supportrelations@barnardos.org.uk
81 W Blackhall St, Greenock, PA15 1XP

Warm space at Nurture Service for families who currently use Barnardo's services

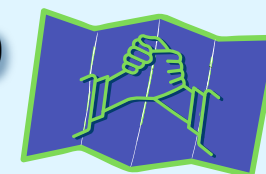


Inverclyde
council

INVERCLYDE
HSCP
Health and Social
Care Partnership



Inverclyde Warm Spaces & Activities Map



Greenock Friendship Club

07591 030 805

jimmymacjimmyuk@yahoo.co.uk
42 Regent St, Greenock, PA15 4PL

45+ Social Evening - Wednesdays
8pm-11pm, at Greenock Morton
Supporters Club (address above).
Dancing, bingo, raffles, live music
theme and party nights, singles and
couples most welcome

Your Voice

01475 728628

enquiries@yourvce.org.uk
12 Clyde Square, Greenock, PA15
1NB

Activities on most days of the week

Best Friends Group - ladies' group -
tea, coffee, chats and crafty
activities, get in touch for more info

Friends 4 Ever

01475 715 800

allybally1971@gmail.com
110 Lynedoch Street, Greenock,
PA15 4AH

Fridays 6:30pm-9:30pm Social club
for kids and young adults with a
range of disabilities. Make friends
and try new activities, run by
parents and carers - who can stay
and have a cuppa and a chat

Central Library

01475 712323

Wallace Place, Greenock

Mon & Thurs 9:30am-7pm

Tues & Fri 9:30am-5pm

Wed 9:30am-1pm

Sat 10am-1pm

Ongoing children and adult events
and activities, all free and open to
all - pop in for more details

Wellpark Mid-Kirk

01475 721 147

info@wellparkmidkirk.com
6 Cathcart Square, Greenock, PA15
1LS

Messy Church - Third Saturday of
the month, 4pm-6pm - crafts,
games, stories and singing
Refreshments throughout, finished
off with a chat and a meal together
All very welcome!

Greenock Baptist Church

01475 713 728

www.greenockbaptisit.org/contact
St Andrew St, Greenock, PA15 1HG

Musical Minds - Last Monday of the
month, 10:30am-12noon, cuppa on
arrival.

For more info, contact Alison Paul at
Alzheimer Scotland 07769 366 288
or Mary (GCAS) 07939 846 717

Greenock Central & East

Greenock Baptist Church

01475 713 728

www.greenockbaptisit.org/contact
St Andrew St, Greenock, PA15 1HG

Warm Spaces Cafe - Fridays 11am-1pm.
Soup, sandwiches and a cuppa, with
board games.

Broomhill Hub

Broomhill Gardens & Community Hub

01475 553 570

info@broomhillhub.org.uk
46 Mearns Street, Greenock, PA15 4QD

Activities on most days of the week

Energy Activators Thursdays 12:30-2:30
- free info and advice on managing your
energy bills

Wellbeing Workshop and Treble C Cafe
Mondays 1-3pm - drop in for a chat in a
safe space

PCF/Street Connect

07760 270 350

alex@streetconnect.co.uk
8 Prospecthill St, Greenock, PA15 4DL

Recovery and Warm Activities - Saturdays:
Circuit Training & breakfast 10:30-12:30pm
Sunday Service with food & coffee 10:30-
1pm

St Laurence's RC Church

01475 720 760

stlaurence@rcdop.org.uk
6 Kilmacolm Road, Greenock, PA15 4XP

Parish Quiz Nights & Afternoon Teas - no
regular dates, but posted to Facebook

Greenock East United Reformed Church

01475 648 486

revsusanhenderson@urcinverclyde.org

Barnard Court Mission, East Hamilton
Street, Greenock

A Warm Welcome - Wednesdays 3pm-
5.30pm, Soup & Bread, teas & coffees.
Open to all from the end of the school
October Holidays until the school
Easter Holidays

Auchmountain Community Resource Centre

01475 791818

32 Burnhead St Greenock, PA15 3LG

Monday - Parent&Toddlers 1:15-2:45pm
Driving Theory 6-8pm
CSCS Construction 6-8pm

Tuesday - Job Skills 10am-12noon
Over 50s Salsa-cise 1-2pm

Wednesday - Glenbrae NurseryBookBug 10-
10:45am
Basic Computing 1-3pm
Health&Fitness 1:15-2:15pm
Active Lifestyles (Swimming & Walking) 2:30-
3:30pm
FBS Fitness Class 6-6:30pm
Basic Spanish 7-9pm

Thursday - Kettlebells 10:30-11:30am
Basic Computing 1-3pm
Over 50s Salsa-cise 1-2pm

Craigend Resource Centre

01475 786739

craigend@talk21.com
McLeod St, Greenock, PA15 2HD

Open Monday to Friday 8am-4pm

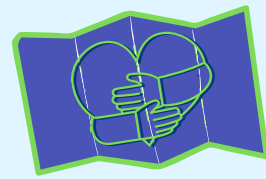
Cafe and Salad Bar - home-made meals
at affordable prices (e.g. Chicken Curry
Wednesdays with rice or chips - £2.40 to
takeaway)

Laundry Services - please call to book a
1hr time slot



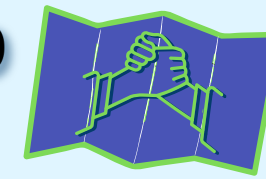
Inverclyde
council





Inverclyde Warm Spaces & Activities Map

Port Glasgow and Kilmacolm



Port Glasgow United Reformed Church

01475 648 486

revsusanhenderson@urcinverclyde.org
PG United Reformed Church, Brown Street, Port Glasgow.

Church Angels Foodbank - Tues & Thurs
10am-12noon.

Wee Blether Cafe - tea, coffee and a blether, free of charge, all welcome

Port Glasgow Library

01475 715629

Fore Street, Port Glasgow

Mon & Thurs 12pm-7pm
Tues & Fri 10am-5pm
Wed & Sat 10am-1pm

Ongoing children and adult events and activities, all free and open to all - pop in for more details

Port Salvation Army

01475 745 369

pgsa@outlook.com

19 King Street, Port Glasgow PA14 5JA

Sunday Meeting - 10:30am followed by refreshments

Toddler Group - Tuesdays 10am-12noon

Recovery Cafe - Tuesdays 1pm-3pm

Crochet Group - Wednesday 6pm

Songster (Choir) Practice - Wednesdays
7pm

Meet and Eat (Coffee Morning) -
Thursdays 10-12

Informal Warm Space

The Trust

01475 533 300

info@thetrust.org.uk

Port Glasgow Office: 7 1/2 John Wood Street, Port Glasgow PA14 5HU

Brew Buddies - Fortnightly befriending get-together
Tuesdays - 4/10, 18/10, 1/11, 15/11, 29/11, 13/12

Kilmacolm Library

01475 715621

Lochwinnoch Road, Kilmacolm

Mon & Thurs 12pm-7pm
Tues & Fri 10am-5pm
Wed & Sat 10am-1pm

Ongoing children and adult events and activities, all free and open to all - pop in for more details

Port Glasgow iYouth Zone

01475 715240

2-4 Dubbs Rd, Port Glasgow, PA14 5UD

Monday - Drop-In (3rd Year+): 7-9:30pm

Tuesday - Charm Group: 10am-12noon
Young Mums Group: 12noon-2pm
Youth Club/Drop-In (1st Year only): 7-9:30pm

Thursday: Adult Literacy Drop-In:
9:30am-1pm

Friday - Youth Club/Drop-In (2nd Year only): 7-9:30pm

The Trust

7 1/2 John Wood Street, Port Glasgow, PA14 5HU

Mondays, 10am-12noon

Fridays, 1pm-3pm

Warm space with hot drinks and snacks, opportunity to link in with other Trust services

Kilmacolm Community Centre

01505 873994

kilmacolm@inverclydeleisure.com
Cargill Centre, Lochwinnoch Road, Kilmacolm, PA13 4LE

Cafe, Library and lots of **Classes** to take part in throughout the week

Mon-Fri: 9am-10pm
Saturday: 9am-3pm
Sunday: Closed