

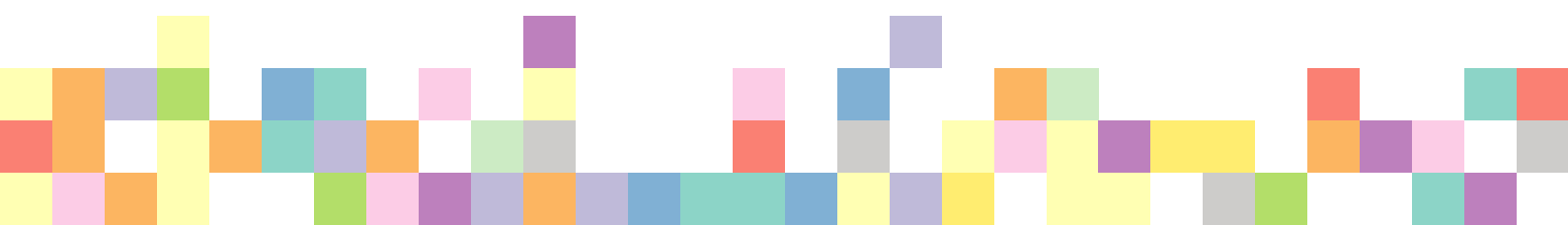


**REMEMBER
MY
NAME**

A SIGNIFICANT CASE REVIEW INTO THE LIFE OF

M A R G A R E T F L E M I N G

E A S Y R E A D



This is an easy read short report into the Significant Case Review looking into the life of Margaret Fleming and the circumstances leading to her death.



A Significant Case Review, also known as a Learning Review, aims to find what lessons can be learned by agencies involved in Margaret's life.



Some of the contents of this report and the main report may be upsetting.



Margaret Fleming grew up in Inverclyde, went to school in Port Glasgow and lived in Inverkip.



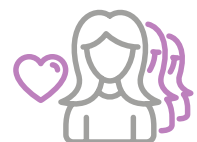
She was 20 when she is thought to have died in 2000.



The carers who were supposed to be looking after Margaret were convicted of murdering her and are now in prison.



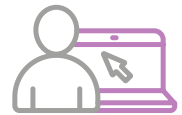
The purpose of the review is to remember Margaret and celebrate her life.



The review also looks at what lessons can be learned from all agencies who were involved in Margaret's life before she died.



The final review has been published on a special section of the Inverclyde Council website set up for the Margaret Fleming Significant Case Review.

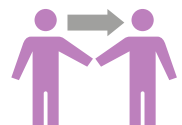
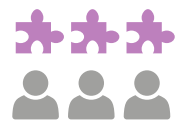


The review makes a large number of recommendations for all agencies to consider and look to introduce.



The key themes from the review are:

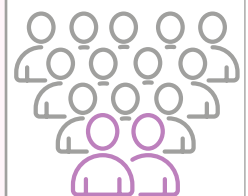
1. Agencies must do more to share information with each other about potentially vulnerable people while respecting their right to privacy to try and ensure they are receiving the correct support.
2. Agencies must ensure people they are working with are seen in person.
3. Consideration should be given to creating a permanent memorial to Margaret Fleming.



Findings from the review will now be considered by all agencies involved and they will look at what they can do better and what changes they can make to their own procedures to improve their care and support for people, particularly vulnerable people.



Over 100 people took part in the review.



The people who took part included agencies involved in Margaret's life such as Social Work, Benefits service, College and Health service.



People with learning disabilities and vulnerable people were also spoken to as part of the review and their feedback has been included in a special Workbook which has also been published.



All parts of the review are published in full on the Margaret Fleming Significant Case Review website for everyone to see to help with learning.



Agencies involved in the review will now consider the recommendations and report back individually about what they are doing with those recommendations.



Other agencies not involved in the review may also find the review and recommendations useful and may wish to act on them.



Thank you to all individuals and agencies who took part in the review.

Thank you

This report was prepared by independent reviewer,
Professor Jean MacLellan OBE.