

INVERCLYDE LOCAL DEVELOPMENT PLAN
2014

PROPOSALS MAP A :
RURAL AREA & INDEX MAP

KEY

SUSTAINABLE DEVELOPMENT STRATEGY

- SDS1

Climate Mitigation and Adaptation
- Reducing Carbon and Energy Use
- SDS2

Integration of Land Use and Sustainable Transport
- SDS3

Placemaking
- * SDS4

Green Network
- SDS5

Development Within the Urban Area
- SDS6

Promoting our Town Centres
- SDS7

Regeneration and Renewal Priorities
- SDS8

Green Belt and the Countryside

* Not highlighted on Map as NOT area, location or site specific

TRANSPORT and CONNECTIVITY

- Trunk Road
- Sustainable Access - Existing
(refer to Policy ENV3)
- TRA2

Sustainable Access - Proposed & Potential
(refer to Policy ENV3)

NATURAL HERITAGE and ENVIRONMENTAL RESOURCES

- SPA (international)
SPA / Ramsar site (international)
- ENV1

SSSI (national)
- SINC (local)
- Designated
Environmental
Resources
(refer to
Table 8.1)
- ENV1

Clyde Muirshiel Regional Park
- ENV1

West Renfrew Hills Scenic Area
- ENV2

Green Belt
- The Countryside
- ENV4

Open Space
- Open Space in the Green Belt
- ENV6

Tree Preservation Orders

BUILT HERITAGE and TOWNSCAPE

- HER7

Archaeological Sites (Scheduled Monuments)
- HER8

Gardens and Designed Landscapes
(refer to Table 9.1)
- River Clyde / Firth of Clyde
- Land Outwith Inverclyde
- Inverclyde Boundary

PROPOSALS MAP C:
GREENOCK (central, west & south west) and GOUROCK

PROPOSALS MAP D:
GREENOCK (east) and PORT GLASGOW

PROPOSALS MAP B:
INVERKIP
and
WEMYSS BAY

PROPOSALS MAP B:
KILMACOLM
and
QUARRIER'S VILLAGE

KEY

SUSTAINABLE DEVELOPMENT STRATEGY

- SDS1 Climate Mitigation and Adaptation
- Reducing Carbon and Energy Use
- SDS2 Integration of Land Use and Sustainable Transport
- SDS3 Placemaking
- * SDS4 Green Network
- SDS5 Development Within the Urban Area
- SDS6 Promoting our Town Centres
- SDS7 Regeneration and Renewal Priorities
- SDS8 Green Belt and the Countryside

* Not highlighted on Map as NOT area, location or site specific

MAJOR AREAS OF CHANGE and POTENTIAL CHANGE

- MAC 4 Former Inverkip Power Station, by Wemyss Bay

ECONOMY and EMPLOYMENT

- ECN2 Business and Industrial Development Opportunities
(Indicative Site)
(refer to Schedule 4.1)

TRANSPORT and CONNECTIVITY

- Trunk Road
- Sustainable Access - Existing
(refer to Policy ENV3)
- TRA2 Sustainable Access - Proposed & Potential
(refer to Policy ENV3)

HOUSING and COMMUNITIES

- RES1 Residential Areas
- RES3 & RES4 Residential Development Opportunities
including Opportunities in Green Belt /
(refer to Schedule 6.1)
- Indicative Site
(refer to Schedule 6.1)
- RES6 Community, Schools and Leisure Proposals
and Opportunities (refer to Schedule 6.2)

TOWN CENTRES and RETAILING

- TCR1 Town Centres and Local Centres
- TCR6 Town Centre/Retail Development Opportunities
(refer to Schedule 7.1)

NATURAL HERITAGE and ENVIRONMENTAL RESOURCES

- SPA (international)
- ENV1 SSSI (national)
- SINC (local)
- ENV1 Clyde Muirshiel Regional Park
- ENV1 West Renfrew Hills Scenic Area
- Green Belt
- ENV2 The Countryside
- ENV3 Green Network: Opportunities for Enhancement
(refer to Schedule 8.1)
- ENV4 Open Space
- Open Space in the Green Belt
- ENV6 Tree Preservation Orders

BUILT HERITAGE and TOWNSCAPE

- HER1 Conservation Areas
(refer to Table 9.1)
- HER3 Proposed New and Amended Conservation Areas
- HER7 Archaeological Sites (Scheduled Monuments)
- HER8 Gardens and Designed Landscapes
(refer to Table 9.1)

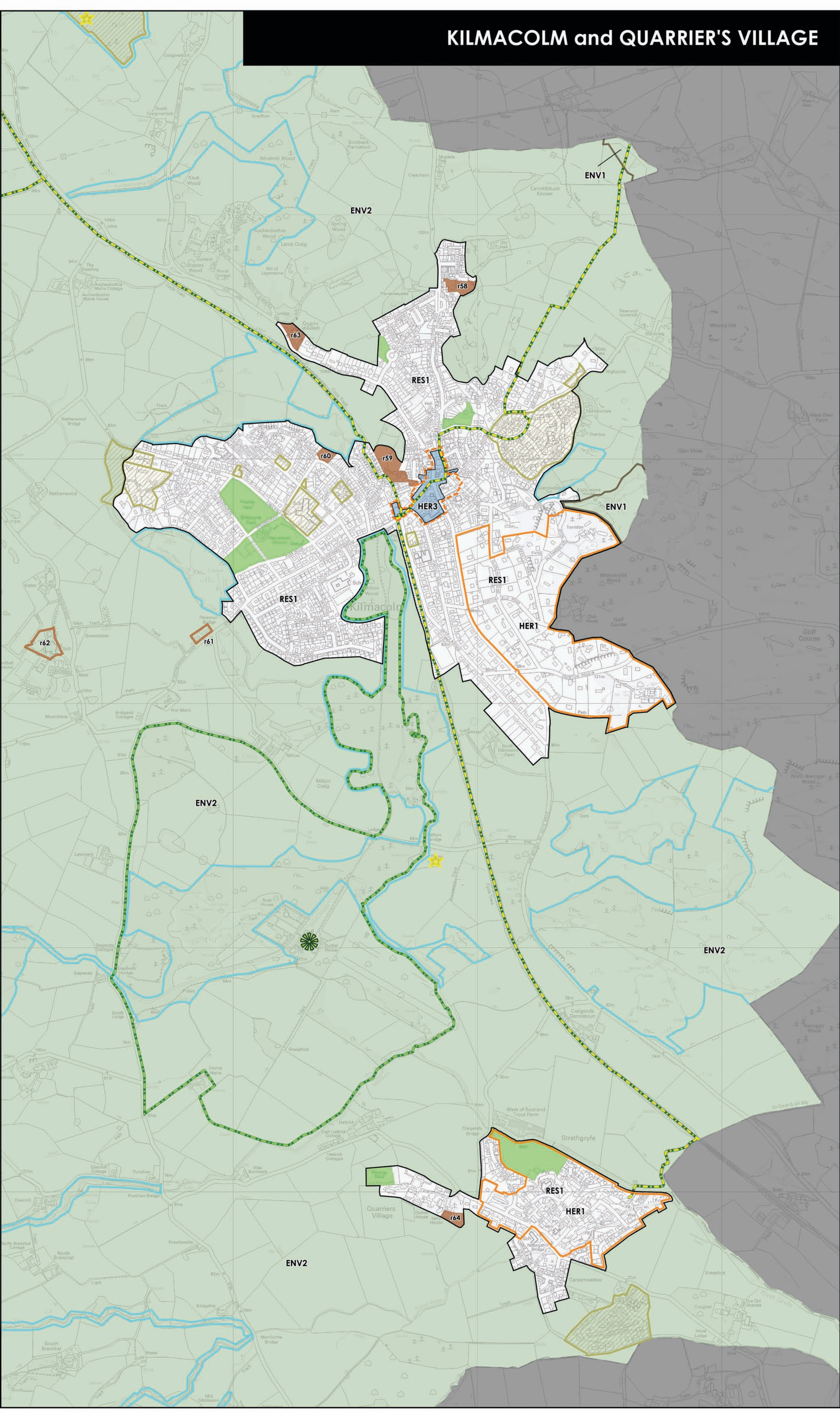
- River Clyde / Firth of Clyde
- Land Outwith Inverclyde

Inverclyde
council

SCALE 1:10,000

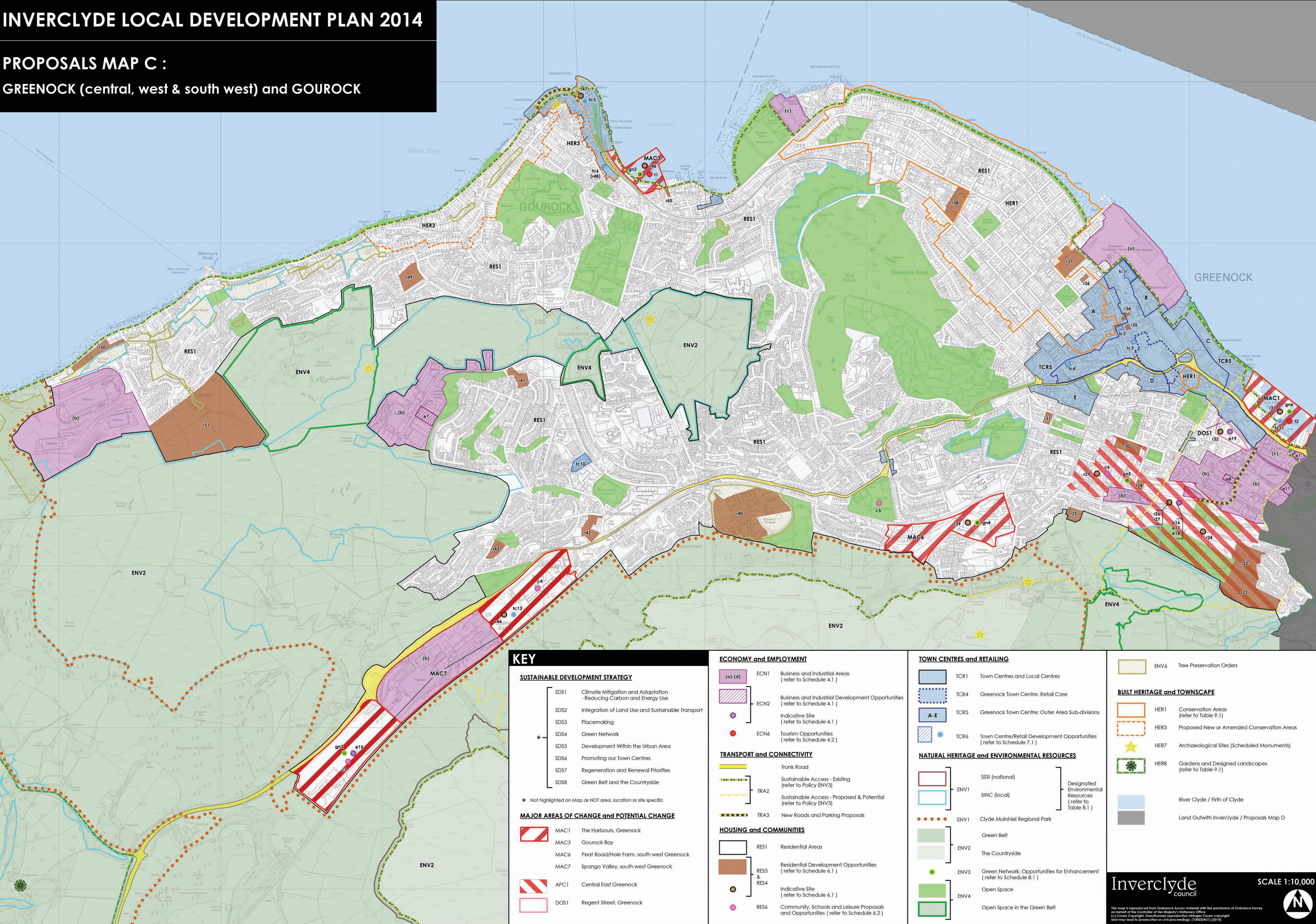


This map is reproduced from Ordnance Survey material with the permission of Ordnance Survey on behalf of the Controller of Her Majesty's Stationary Office.
(c) Crown Copyright. Unauthorised reproduction infringes Crown copyright and may lead to prosecution or civil proceedings. (10002450) (2014)



INVERCLYDE LOCAL DEVELOPMENT PLAN 2014

PROPOSALS MAP C :
GREENOCK (central, west & south west) and GOUROCK



INVERCLYDE LOCAL DEVELOPMENT PLAN 2014

PROPOSALS MAP D : GREENOCK (east) and PORT GLASGOW

KEY

SUSTAINABLE DEVELOPMENT STRATEGY

- SDS1 Climate Mitigation and Adaptation - Reducing Carbon and Energy Use
- SDS2 Integration of Land Use and Sustainable Transport
- SDS3 Placemaking
- * SDS4 Green Network
- SDS5 Development Within the Urban Area
- SDS6 Promoting our Town Centres
- SDS7 Regeneration and Renewal Priorities
- SDS8 Green Belt and the Countryside

* Not highlighted on Map as NOT area, location or site specific

MAJOR AREAS OF CHANGE and POTENTIAL CHANGE

- MAC 2 James Watt Dock / Garvel Island, Greenock
- MAC 5 Woodhall, Port Glasgow
- APC 2 Inner Lower Port Glasgow
- DOS 2 John Street, Greenock
- DOS 3 Sinclair Street, Greenock

ECONOMY and EMPLOYMENT

- (a)-(d) ECN1 Business and Industrial Areas (refer to Schedule 4.1)
- ECN2 Business and Industrial Development Opportunities (refer to Schedule 4.1)
- Indicative Site (refer to Schedule 4.1)
- ECN6 Tourism Opportunities (refer to Schedule 4.2)

TRANSPORT and CONNECTIVITY

- Trunk Road
- Sustainable Access - Existing (refer to Policy ENV3)
- TRA2 Sustainable Access - Proposed & Potential (refer to Policy ENV3)

HOUSING and COMMUNITIES

- RES1 Residential Areas
- RES3 & RES4 Residential Development Opportunities (refer to Schedule 6.1)
- Indicative Site (refer to Schedule 6.1)
- RES6 Community, Schools and Leisure Proposals and Opportunities (refer to Schedule 6.2)

TOWN CENTRES and RETAILING

- TCR1 Town Centres and Local Centres
- TCR6 Town Centre/Retail Development Opportunities (refer to Schedule 7.1)

NATURAL HERITAGE and ENVIRONMENTAL RESOURCES

- SPA / Ramsar site (international)
- ENV1 SSSI (national)
- SINC (local)
- ENV1 Clyde Muirshiel Regional Park
- ENV2 Green Belt
- The Countryside
- ENV3 Green Network: Opportunities for Enhancement (refer to Schedule 8.1)

- Open Space
- ENV4 Open Space in the Green Belt
- ENV6 Tree Preservation Orders

BUILT HERITAGE and TOWNSCAPE

- HER7 Archaeological Sites (Scheduled Monuments)
- HER8 Gardens and Designed Landscapes (refer to Table 9.1)
- River Clyde / Firth of Clyde
- Land Outwith Inverclyde / Proposals Map C

Inverclyde
council

SCALE 1:10,000



This map is reproduced from Ordnance Survey material with the permission of Ordnance Survey on behalf of the Controller of Her Majesty's Stationary Office.
(c) Crown Copyright. Unauthorised reproduction infringes Crown copyright and may lead to prosecution or civil proceedings. (100023421) (2014)

