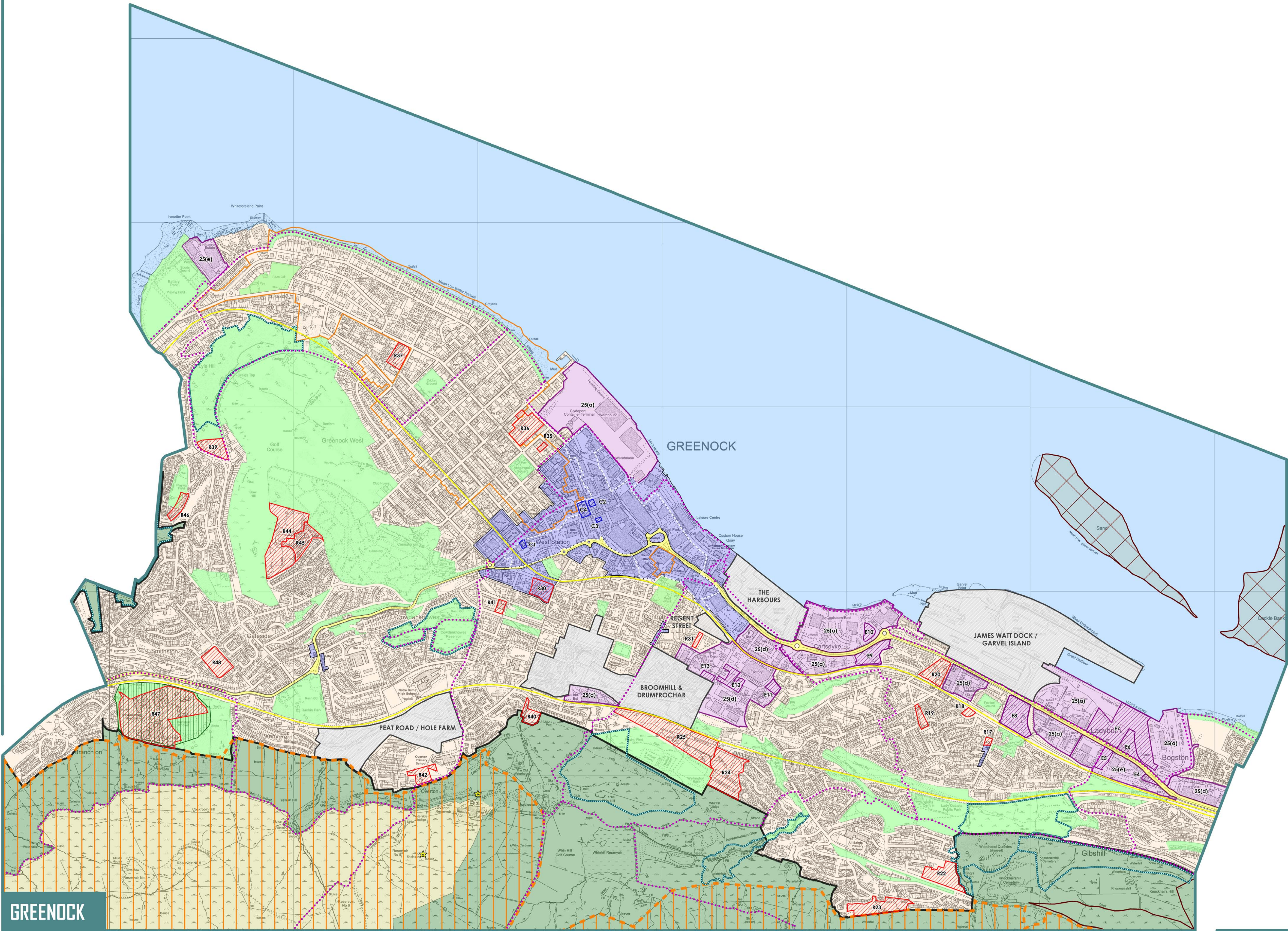


# LOCAL DEVELOPMENT PLAN

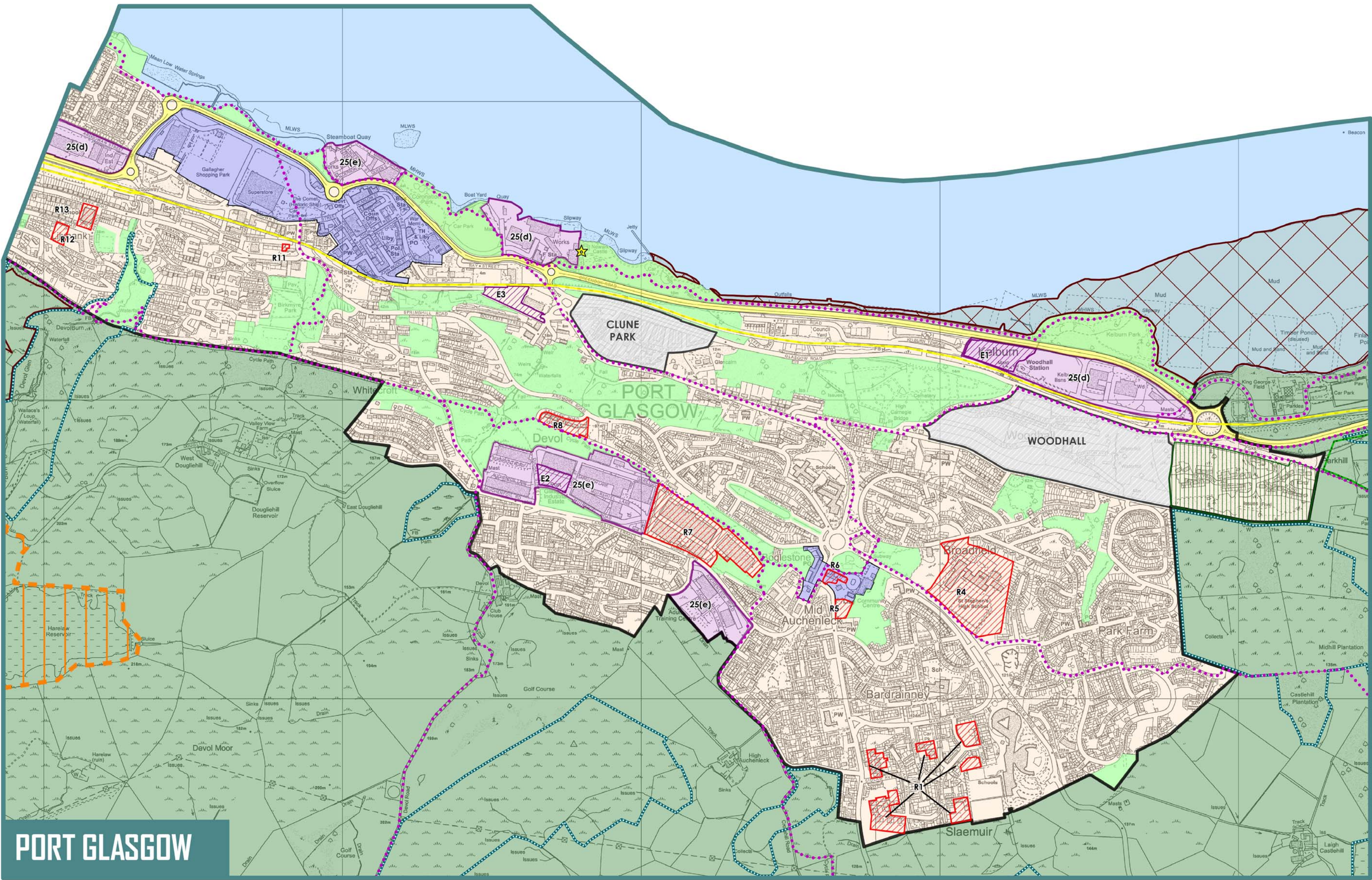
## PROPOSED PLAN 2018



### KEY

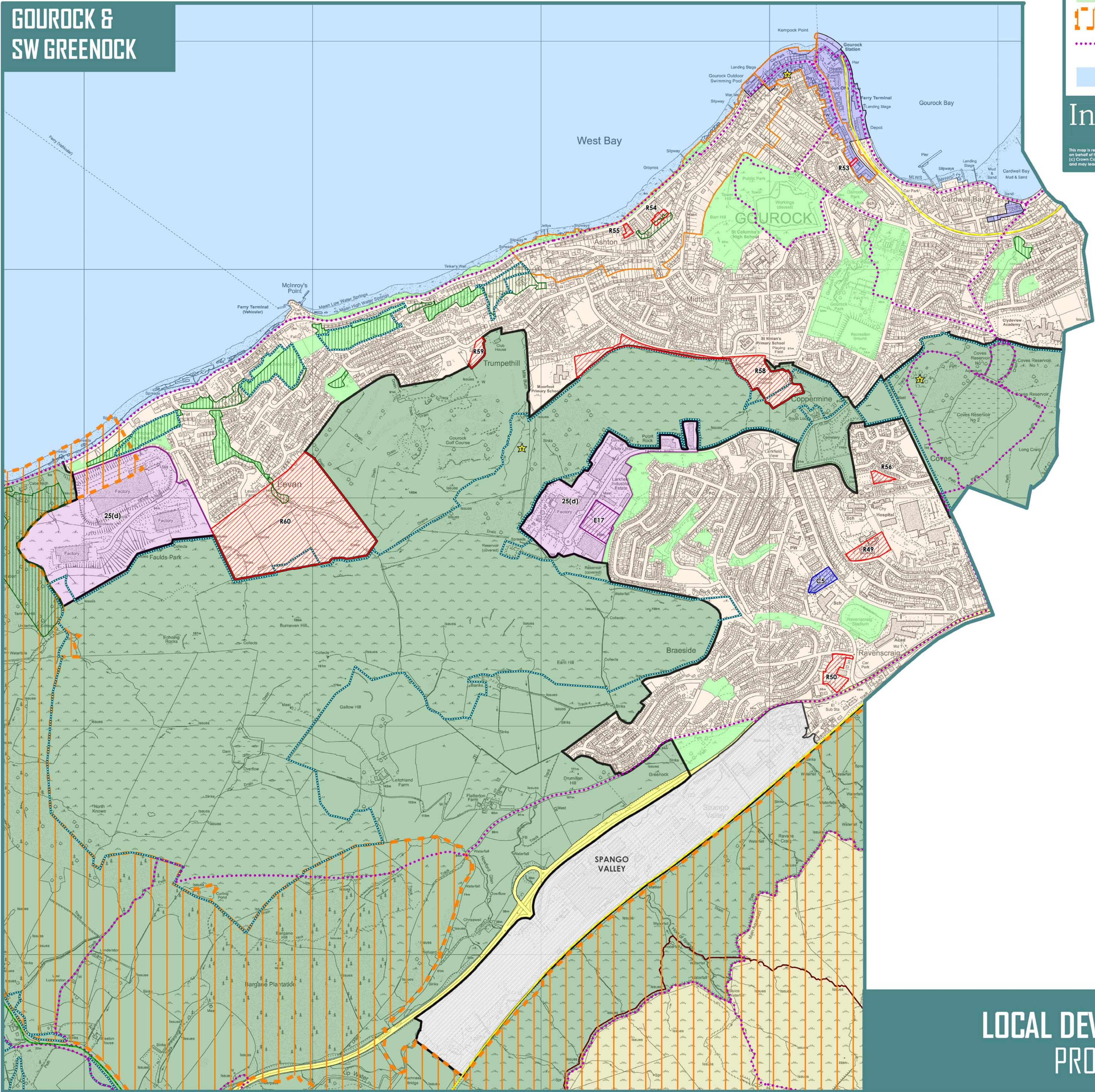
SUSTAINABLE DEVELOPMENT STRATEGY		
	Priority Place	POLICY 3
CONNECTING PEOPLE AND PLACES		
	Trunk Road	POLICY 11
	Railway	POLICY 11
SPATIAL DEVELOPMENT STRATEGY		
	Green Belt	POLICIES 14 & 19
	Countryside	POLICIES 14 & 19
OUR HOMES AND COMMUNITIES		
	Residential Development Opportunity	POLICY 18
	Residential Area	POLICY 20
OUR TOWN AND LOCAL CENTRES		
	Town Centre / Local Centre	POLICY 22
	Greenock Town Centre Central Area	POLICY 22
	Network of Centres Opportunity	POLICY 22
OUR JOBS AND BUSINESSES		
	Business & Industrial Area	POLICY 25
	Business & Industrial Development Opportunity	POLICY 26
OUR HISTORIC BUILDINGS AND PLACES		
	Conservation Area	POLICY 28
	Scheduled Monument	POLICY 31
OUR NATURAL AND OPEN SPACES		
	Special Protection Area / Ramsar Site	POLICY 33
	Site of Special Scientific Interest	POLICY 33
	Local Nature Conservation Site	POLICY 33
	Tree Preservation Order	POLICY 34
	Open Space	POLICY 35
	Clyde Muirshiel Regional Park	POLICY 37
	Core Path	POLICY 38
	River Clyde / Firth of Clyde	





PORT GLASGOW

GOUROCK & SW GREENOCK



### KEY

#### SUSTAINABLE DEVELOPMENT STRATEGY

Priority Place

POLICY 3

#### CONNECTING PEOPLE AND PLACES

Trunk Road

POLICY 11

Railway

POLICY 11

#### SPATIAL DEVELOPMENT STRATEGY

Green Belt

POLICIES 14 & 19

Countryside

POLICIES 14 & 19

#### OUR HOMES AND COMMUNITIES

Residential Development Opportunity

POLICY 18

Residential Area

POLICY 20

#### OUR TOWN AND LOCAL CENTRES

Town Centre / Local Centre

POLICY 22

Network of Centres Opportunity

POLICY 22

#### OUR JOBS AND BUSINESSES

Business & Industrial Area

POLICY 25

Business & Industrial Development Opportunity

POLICY 26

#### OUR HISTORIC BUILDINGS AND PLACES

Conservation Area

POLICY 28

Scheduled Monument

POLICY 31

Gardens & Designed Landscapes

POLICY 32

#### OUR NATURAL AND OPEN SPACES

Special Protection Area / Ramsar Site

POLICY 33

Site of Special Scientific Interest

POLICY 33

Local Nature Conservation Site

POLICY 33

Tree Preservation Order

POLICY 34

Open Space

POLICY 35

Clyde Muirshiel Regional Park

POLICY 37

Core Path

POLICY 38

River Clyde / Firth of Clyde

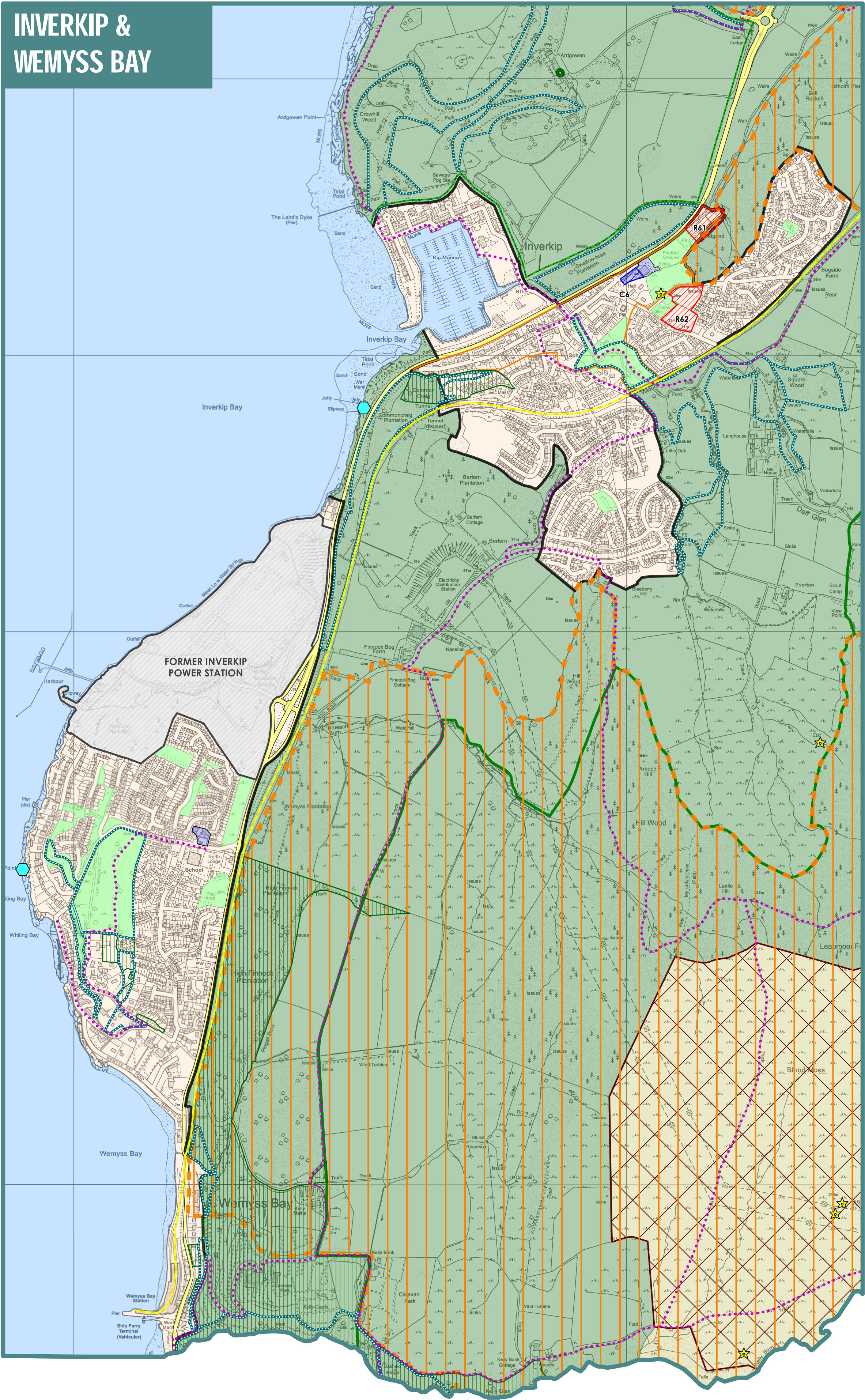
Inverclyde council

SCALE 1:10,000

This map is reproduced from Ordnance Survey material with the permission of Ordnance Survey on behalf of the Controller of Her Majesty's Stationary Office.  
© Crown Copyright. Unauthorised reproduction is illegal. Crown copyright and may lead to prosecution or civil proceedings. (100023421) (2018)



INVERKIP &  
WEMYSS BAY



KEY

- SUSTAINABLE DEVELOPMENT STRATEGY**
- Priority Place
- CONNECTING PEOPLE AND PLACES**
- Trunk Road
  - Railway
- SPATIAL DEVELOPMENT STRATEGY**
- Green Belt
  - Countryside
- OUR HOMES AND COMMUNITIES**
- Residential Development Opportunity
  - Residential Area
- OUR TOWN AND LOCAL CENTRES**
- Town Centre / Local Centre
  - Network of Centres Opportunity
- OUR JOBS AND BUSINESSES**
- Business & Industrial Area
  - Business & Industrial Development Opportunity
- OUR HISTORIC BUILDINGS AND PLACES**
- Conservation Area
  - Scheduled Monument
  - Gardens & Designed Landscapes
- OUR NATURAL AND OPEN SPACES**
- Special Protection Area / Ramsar Site
  - Site of Special Scientific Interest
  - Local Nature Conservation Site
  - Local Nature Conservation Site (Geological)
  - West Renfrew Hills Local Landscape Area
  - Tree Preservation Order
  - Open Space
  - Clyde Muirshiel Regional Park
  - Core Path
  - River Clyde / Firth of Clyde
- POLICY 3**
- POLICY 11**
- POLICY 11**
- POLICIES 14 & 19**
- POLICIES 14 & 19**
- POLICY 18**
- POLICY 20**
- POLICY 22**
- POLICY 22**
- POLICY 25**
- POLICY 26**
- POLICY 28**
- POLICY 31**
- POLICY 32**
- POLICY 33**
- POLICY 33**
- POLICY 33**
- POLICY 33**
- POLICY 33**
- POLICY 33**
- POLICY 34**
- POLICY 35**
- POLICY 37**
- POLICY 38**

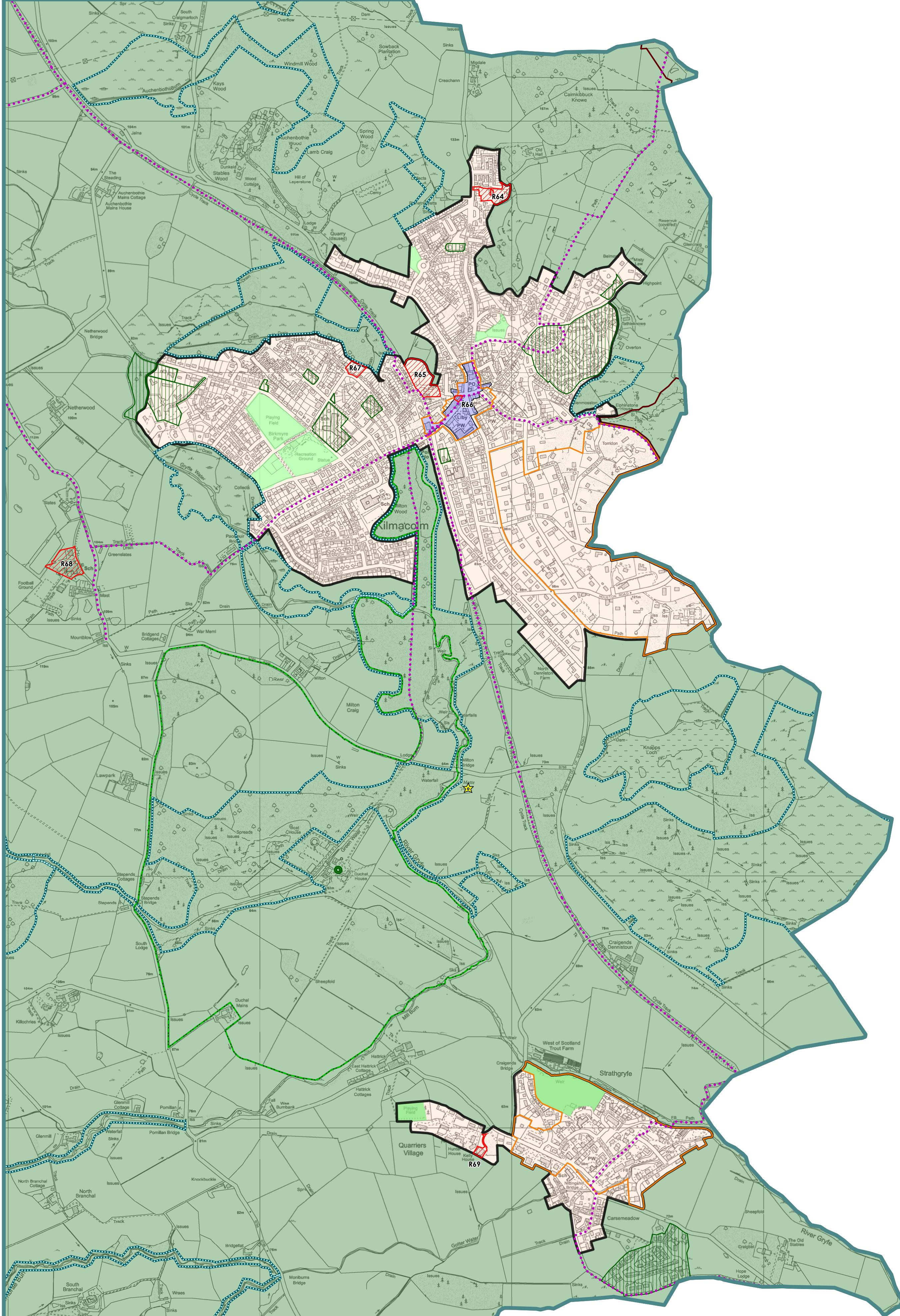
Inverclyde council

SCALE 1:10,000

N

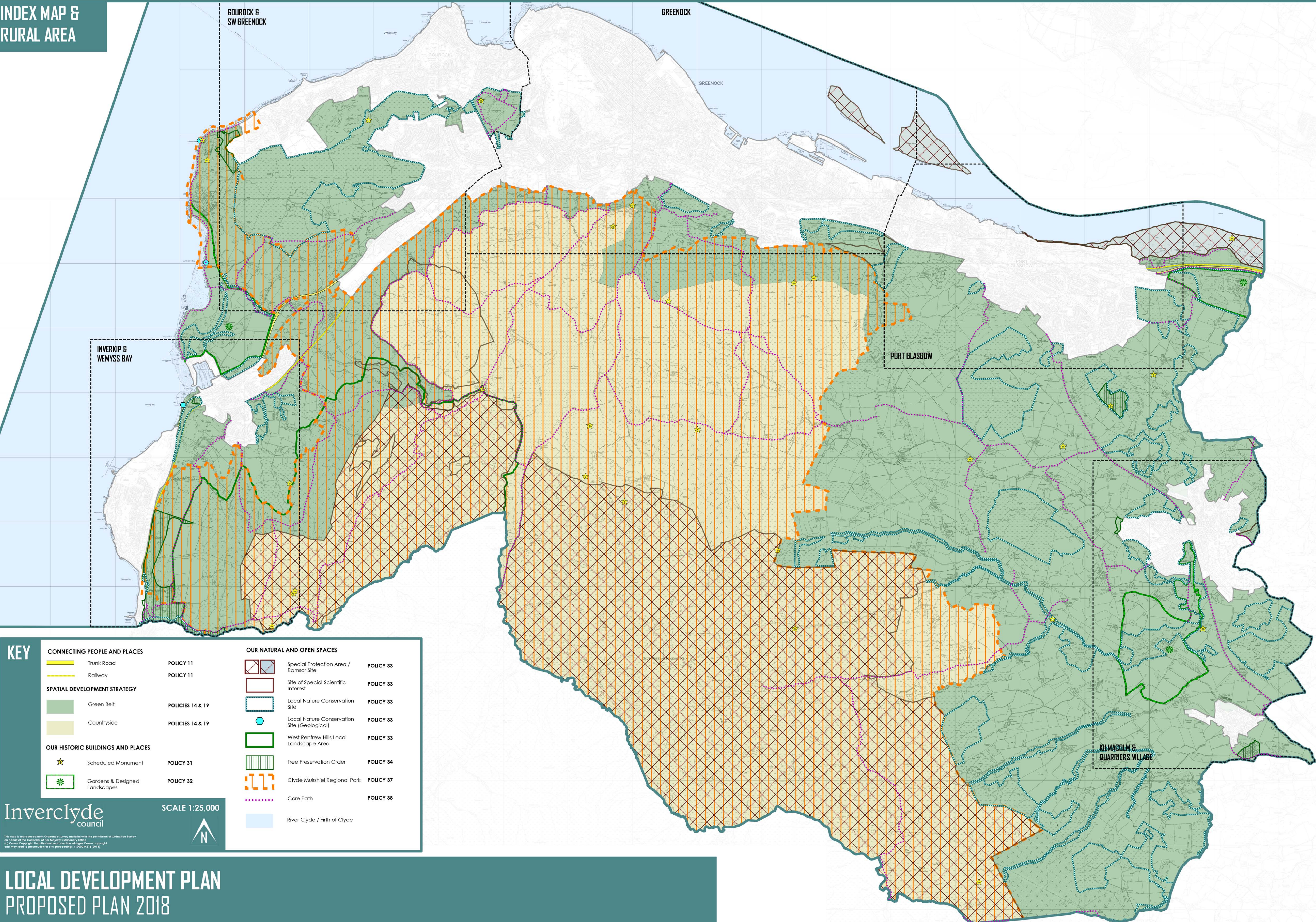
This map is reproduced from Ordnance Survey material with the permission of Ordnance Survey on behalf of the Controller of Her Majesty's Stationery Office.  
© Crown Copyright. Downloaded from the Ordnance Survey website. All rights reserved. Ordnance Survey copyright and may lead to prosecution or civil proceedings. (100023421) (2018)

KILMACOLM &  
QUARRIERS VILLAGE





INDEX MAP &  
RURAL AREA



Inverclyde  
council

SCALE 1:25,000



LOCAL DEVELOPMENT PLAN  
PROPOSED PLAN 2018