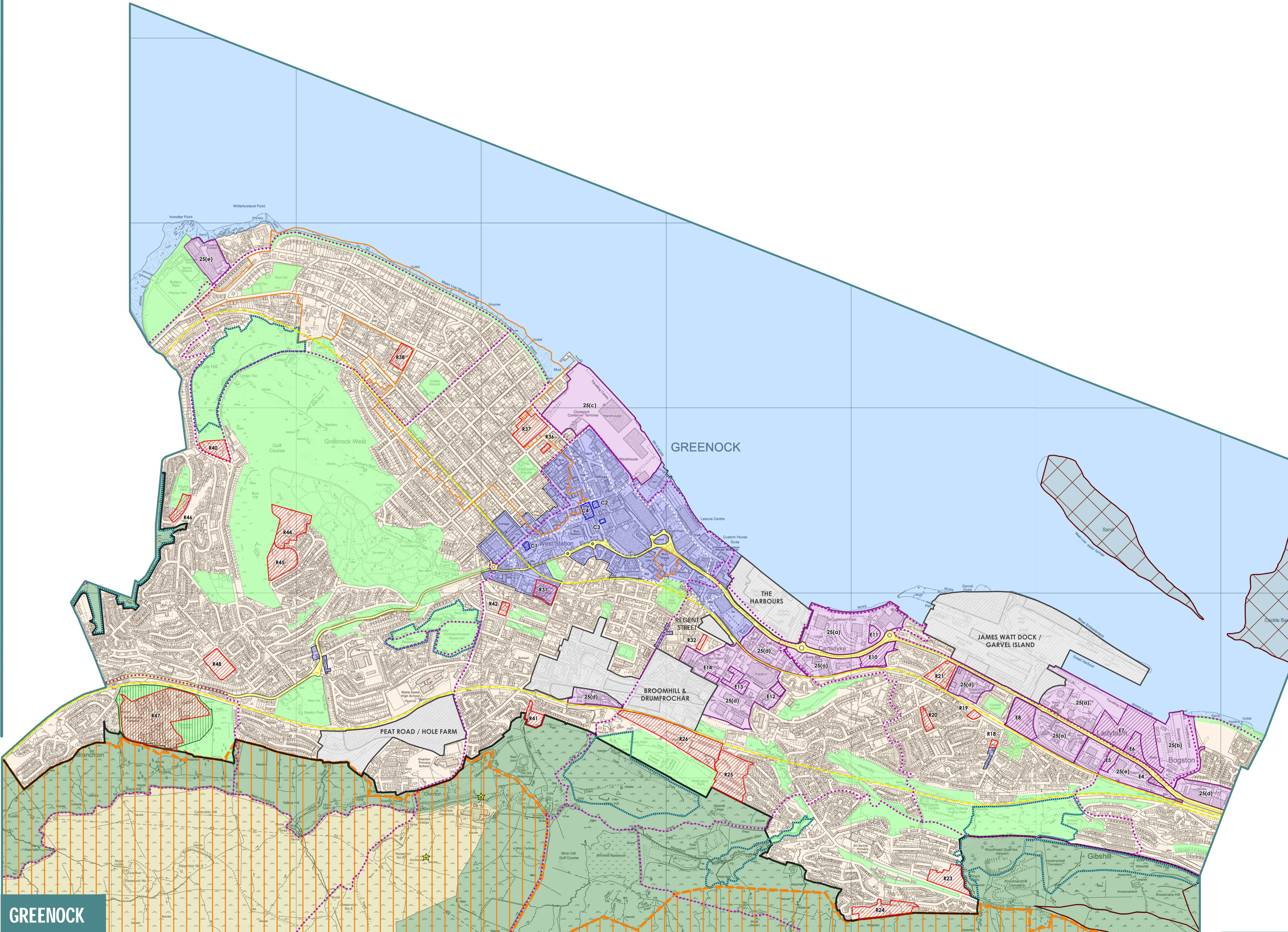


# LOCAL DEVELOPMENT PLAN 2019



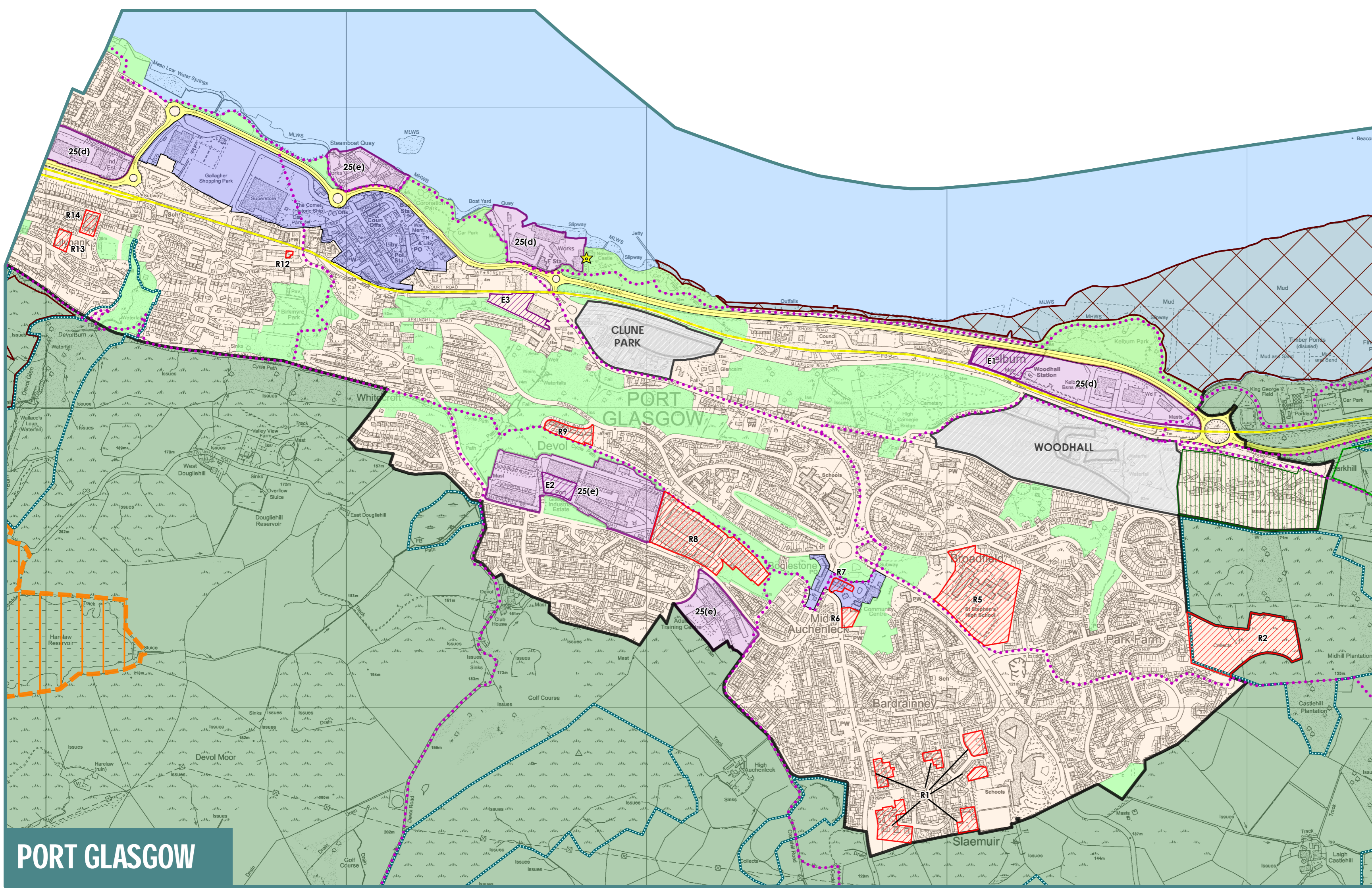
## KEY

SUSTAINABLE DEVELOPMENT STRATEGY		
	Priority Place	POLICY 3
CONNECTING PEOPLE AND PLACES		
	Trunk Road	POLICY 11
	Railway	POLICY 11
SPATIAL DEVELOPMENT STRATEGY		
	Green Belt	POLICIES 14 & 19
	Countryside	POLICIES 14 & 19
OUR HOMES AND COMMUNITIES		
	Residential Development Opportunity	POLICY 18
	Residential Area	POLICY 20
OUR TOWN AND LOCAL CENTRES		
	Town Centre / Local Centre	POLICY 22
	Greenock Town Centre Central Area	POLICY 22
	Network of Centres Opportunity	POLICY 22
OUR JOBS AND BUSINESSES		
	Business & Industrial Area	POLICY 25
	Business & Industrial Development Opportunity	POLICY 26
OUR HISTORIC BUILDINGS AND PLACES		
	Conservation Area	POLICY 28
	Scheduled Monument	POLICY 31
OUR NATURAL AND OPEN SPACES		
	Special Protection Area / Ramsar Site	POLICY 33
	Site of Special Scientific Interest	POLICY 33
	Local Nature Conservation Site	POLICY 33
	Tree Preservation Order	POLICY 34
	Open Space	POLICY 35
	Clyde Muirshiel Regional Park	POLICY 37
	Core Path	POLICY 38
	River Clyde / Firth of Clyde	

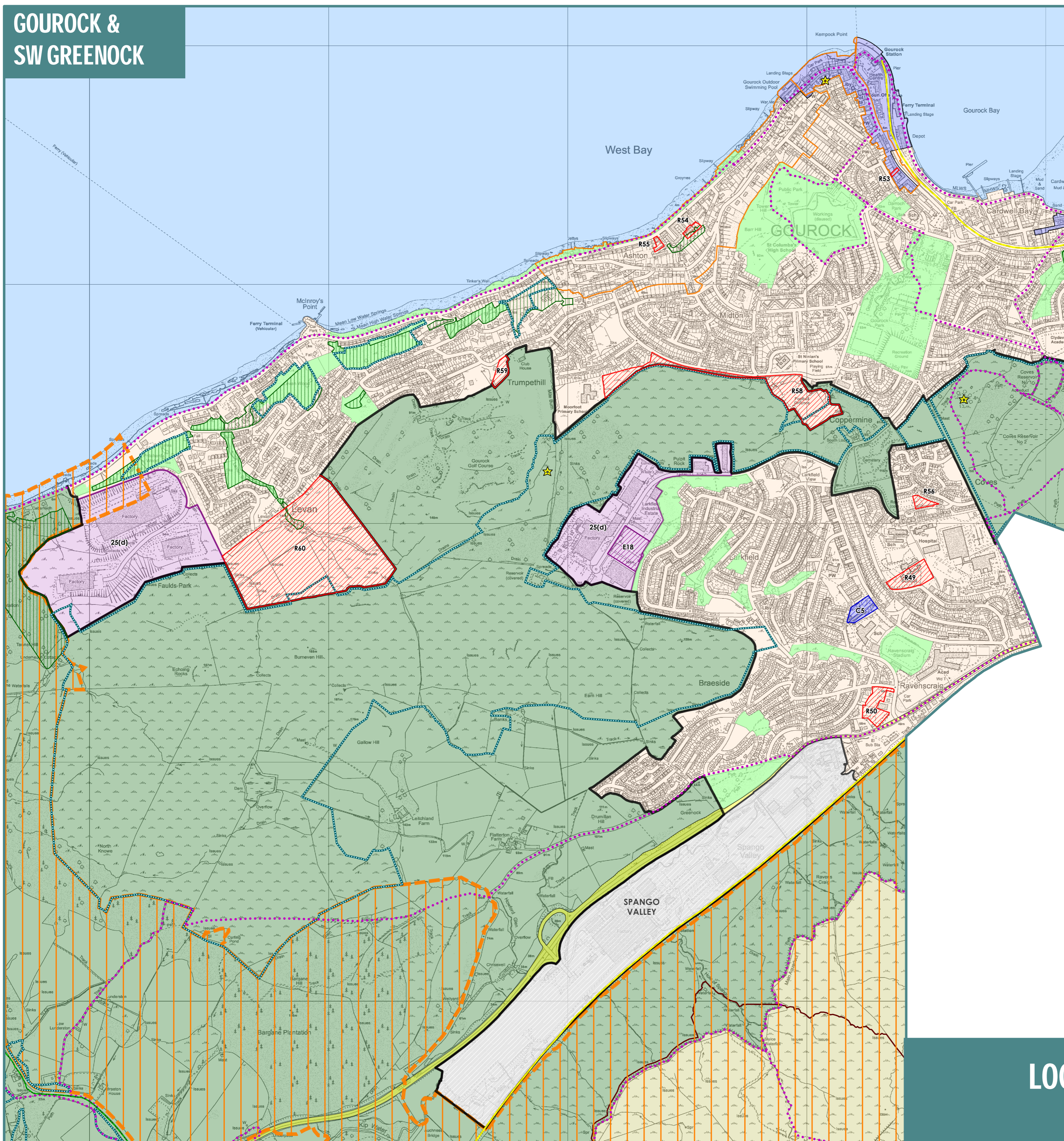
Inverclyde council SCALE 1:10,000

This map is reproduced from Ordnance Survey material with the permission of Ordnance Survey on behalf of the Controller of Her Majesty's Stationery Office.  
© Crown Copyright. Unauthorised reproduction may be a criminal offence under the Copyright, Designs and Patents Act 1988 and may lead to prosecution or civil proceedings. (100023427) (2019)

GREENOCK



PORT GLASGOW



GOUROCK & SW GREENOCK

**KEY**

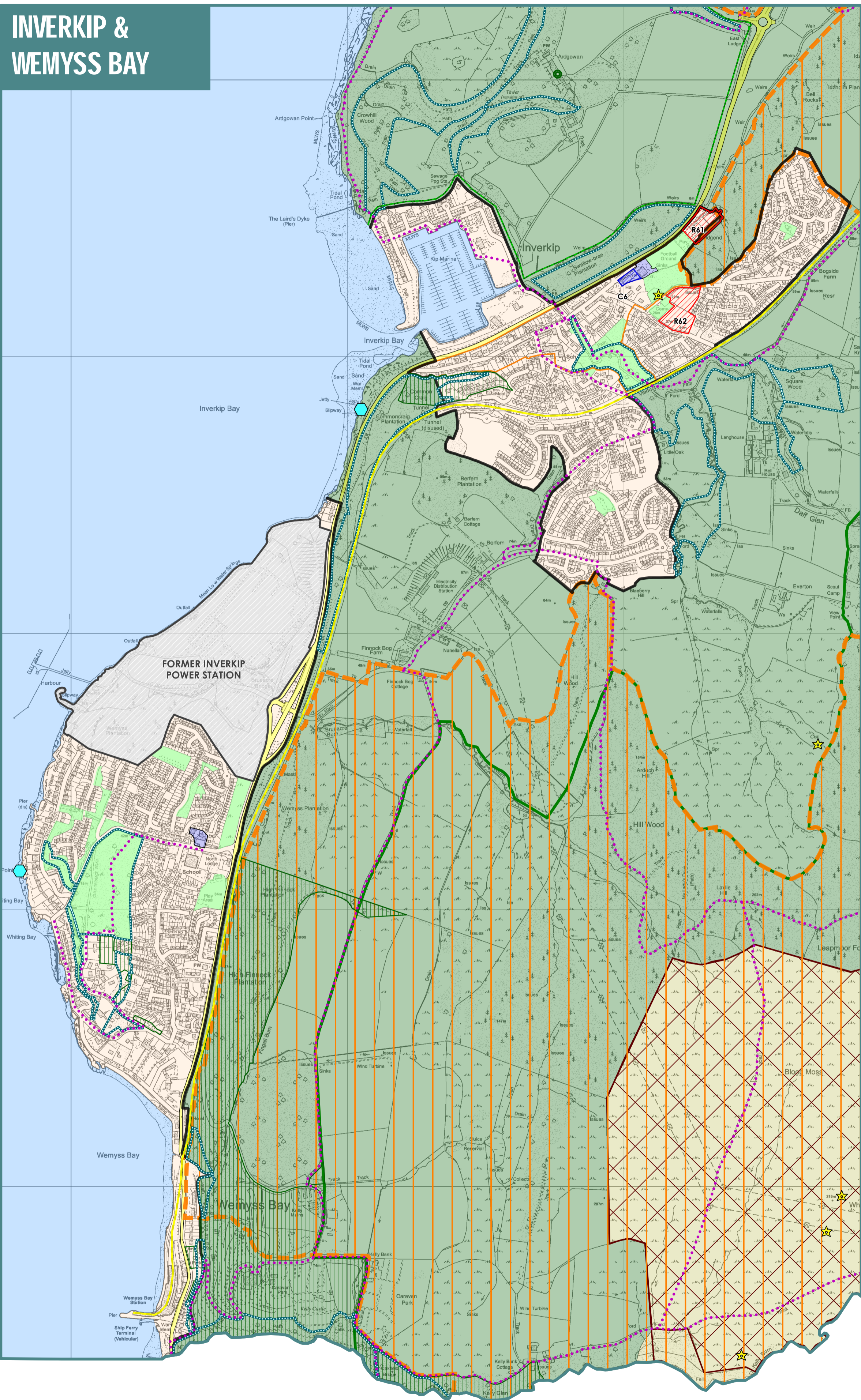
<b>SUSTAINABLE DEVELOPMENT STRATEGY</b>		
	Priority Place	<b>POLICY 3</b>
<b>CONNECTING PEOPLE AND PLACES</b>		
	Trunk Road	<b>POLICY 11</b>
	Railway	<b>POLICY 11</b>
<b>SPATIAL DEVELOPMENT STRATEGY</b>		
	Green Belt	<b>POLICIES 14 &amp; 19</b>
	Countryside	<b>POLICIES 14 &amp; 19</b>
<b>OUR HOMES AND COMMUNITIES</b>		
	Residential Development Opportunity	<b>POLICY 18</b>
	Residential Area	<b>POLICY 20</b>
<b>OUR TOWN AND LOCAL CENTRES</b>		
	Town Centre / Local Centre	<b>POLICY 22</b>
	Network of Centres Opportunity	<b>POLICY 22</b>
<b>OUR JOBS AND BUSINESSES</b>		
	Business & Industrial Area	<b>POLICY 25</b>
	Business & Industrial Development Opportunity	<b>POLICY 26</b>
<b>OUR HISTORIC BUILDINGS AND PLACES</b>		
	Conservation Area	<b>POLICY 28</b>
	Scheduled Monument	<b>POLICY 31</b>
	Gardens & Designed Landscapes	<b>POLICY 32</b>
<b>OUR NATURAL AND OPEN SPACES</b>		
	Special Protection Area / Ramsar Site	<b>POLICY 33</b>
	Site of Special Scientific Interest	<b>POLICY 33</b>
	Local Nature Conservation Site	<b>POLICY 33</b>
	Tree Preservation Order	<b>POLICY 34</b>
	Open Space	<b>POLICY 35</b>
	Clyde Muirshiel Regional Park	<b>POLICY 37</b>
	Core Path	<b>POLICY 38</b>
	River Clyde / Firth of Clyde	

Inverclyde council SCALE 1:10,000

This map is reproduced from Ordnance Survey material with the permission of Ordnance Survey on behalf of the Controller of Her Majesty's Stationery Office. © Crown Copyright. Unauthorised reproduction infringes Crown copyright and may lead to prosecution or civil proceedings. 100024121 (2019)



# INVERKIP & WEMYSS BAY



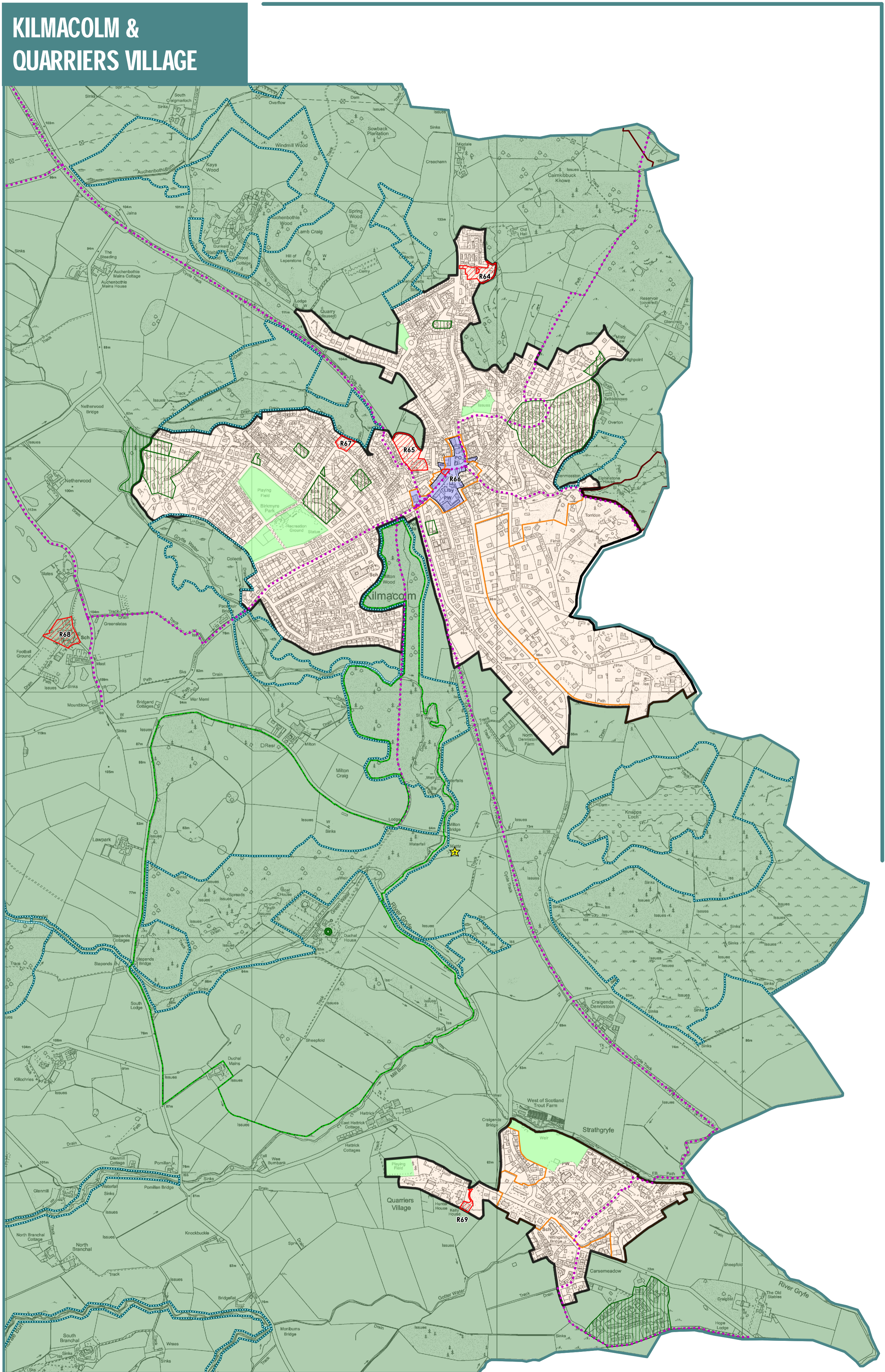
## KEY

- |   |  |                  |
|---|--|------------------|
| <b>SUSTAINABLE DEVELOPMENT STRATEGY</b>       |  |                  |
| Priority Place                                |  | POLICY 3         |
| <b>CONNECTING PEOPLE AND PLACES</b>           |  |                  |
| Trunk Road                                    |  | POLICY 11        |
| Railway                                       |  | POLICY 11        |
| <b>SPATIAL DEVELOPMENT STRATEGY</b>           |  |                  |
| Green Belt                                    |  | POLICIES 14 & 19 |
| Countryside                                   |  | POLICIES 14 & 19 |
| <b>OUR HOMES AND COMMUNITIES</b>              |  |                  |
| Residential Development Opportunity           |  | POLICY 18        |
| Residential Area                              |  | POLICY 20        |
| <b>OUR TOWN AND LOCAL CENTRES</b>             |  |                  |
| Town Centre / Local Centre                    |  | POLICY 22        |
| Network of Centres Opportunity                |  | POLICY 22        |
| <b>OUR JOBS AND BUSINESSES</b>                |  |                  |
| Business & Industrial Area                    |  | POLICY 25        |
| Business & Industrial Development Opportunity |  | POLICY 26        |
| <b>OUR HISTORIC BUILDINGS AND PLACES</b>      |  |                  |
| Conservation Area                             |  | POLICY 28        |
| Scheduled Monument                            |  | POLICY 31        |
| Gardens & Designed Landscapes                 |  | POLICY 32        |
| <b>OUR NATURAL AND OPEN SPACES</b>            |  |                  |
| Special Protection Area / Ramsar Site         |  | POLICY 33        |
| Site of Special Scientific Interest           |  | POLICY 33        |
| Local Nature Conservation Site                |  | POLICY 33        |
| Local Nature Conservation Site (Geological)   |  | POLICY 33        |
| West Renfrew Hills Local Landscape Area       |  | POLICY 33        |
| Tree Preservation Order                       |  | POLICY 34        |
| Open Space                                    |  | POLICY 35        |
| Clyde Muirshiel Regional Park                 |  | POLICY 37        |
| Core Path                                     |  | POLICY 38        |
| River Clyde / Firth of Clyde                  |  |                  |

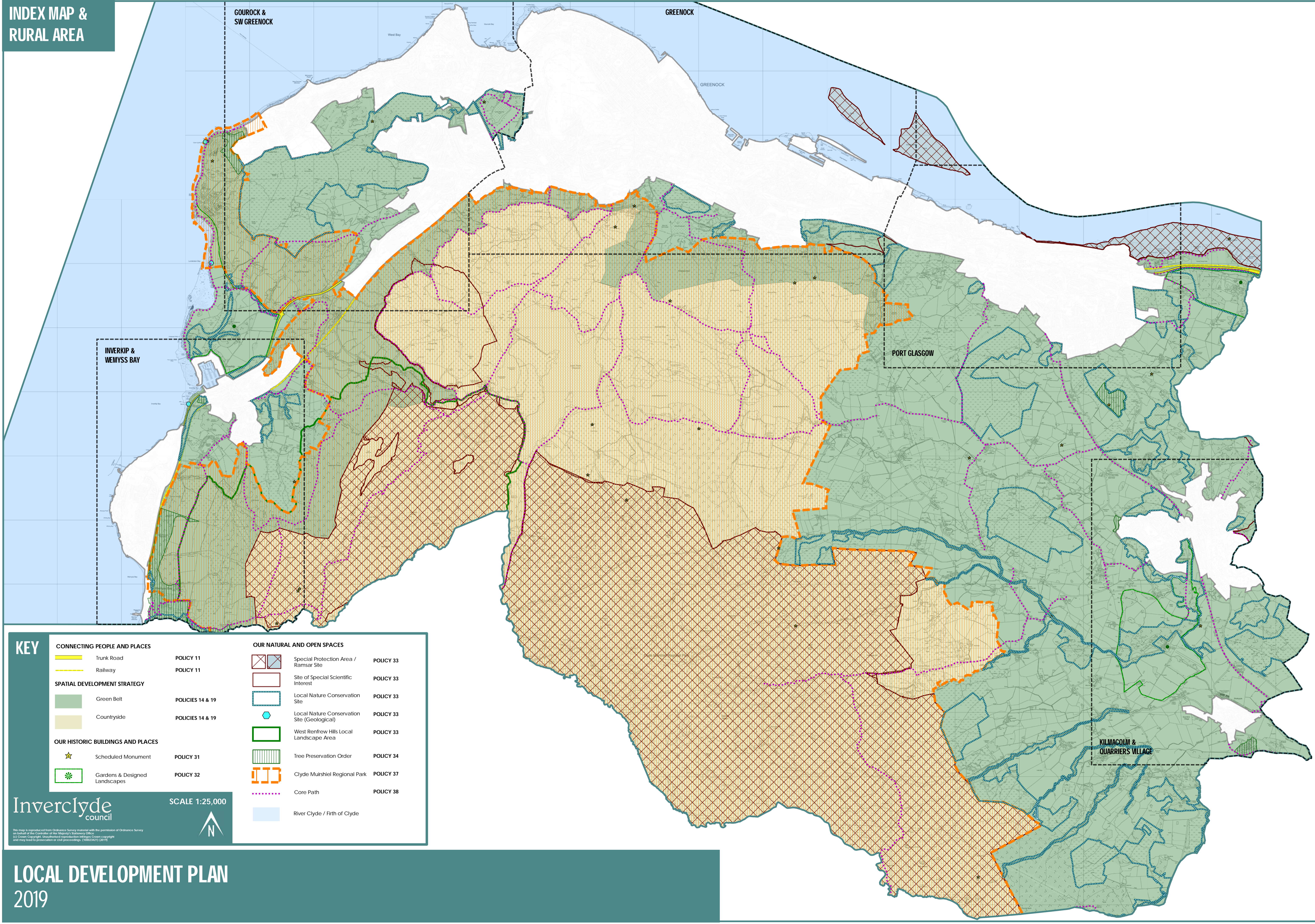
Inverclyde council SCALE 1:10,000

The map is reproduced from Ordnance Survey material with the permission of Ordnance Survey on behalf of the Controller of Her Majesty's Stationery Office.  
© Crown Copyright. Reproduced with the permission of the Controller of Her Majesty's Stationery Office and may lead to prosecution or civil proceedings. (100023421) (2019)

# KILMACOLM & QUARRIERS VILLAGE



# INDEX MAP & RURAL AREA



**KEY**

<b>CONNECTING PEOPLE AND PLACES</b>	Trunk Road	<b>POLICY 11</b>	Special Protection Area / Ramsar Site	<b>POLICY 33</b>
	Railway	<b>POLICY 11</b>	Site of Special Scientific Interest	<b>POLICY 33</b>
<b>SPATIAL DEVELOPMENT STRATEGY</b>	Green Belt	<b>POLICIES 14 &amp; 19</b>	Local Nature Conservation Site	<b>POLICY 33</b>
	Countryside	<b>POLICIES 14 &amp; 19</b>	Local Nature Conservation Site (Geological)	<b>POLICY 33</b>
<b>OUR HISTORIC BUILDINGS AND PLACES</b>	Scheduled Monument	<b>POLICY 31</b>	West Renfrew Hills Local Landscape Area	<b>POLICY 33</b>
	Gardens & Designed Landscapes	<b>POLICY 32</b>	Tree Preservation Order	<b>POLICY 34</b>
			Clyde Muirshiel Regional Park	<b>POLICY 37</b>
			Core Path	<b>POLICY 38</b>
			River Clyde / Firth of Clyde	

**Inverclyde council** SCALE 1:25,000

This map is reproduced from Ordnance Survey material with the permission of Ordnance Survey on behalf of the Controller of Her Majesty's Stationery Office. © Crown Copyright. Unauthorised reproduction infringes Crown copyright and may lead to prosecution or civil proceedings. (100033421) (2019)

# LOCAL DEVELOPMENT PLAN 2019